



# Modernist Industries for the Transition-Era Layout

Christopher J. Palermo – San Carlos, California

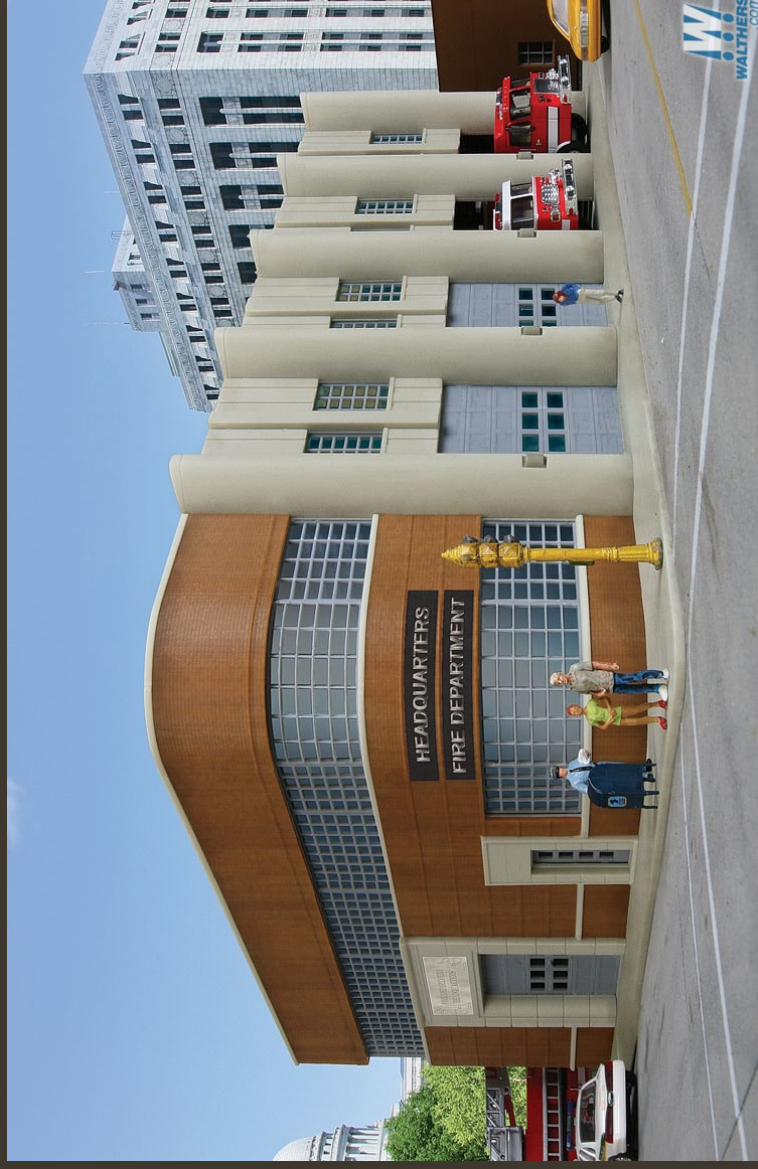
## What “Modernism” (in this preso) is Not

- Streamlined Moderne (1930s)
- Jet Age Modern (late 1950s to mid-60s)
- Contemporary Modern (for example, most Pikestuff; 2017 Walthers modern releases)

What “Modernism” (in this preso) is Not

Walthers City Fire  
Department  
Headquarters

Streamlined Moderne  
with curved glass  
(glass block?) walls



What “Modernism” (in this preso) is Not



Blair Line Dari King  
Drive-In

Building signage is  
“busy”

Main sign is Jet Age

## What “Modernism” (in this preso) Is

- Mid-century Modern
- International Style
- Bauhaus

## Why Mid-century Modern?

- Under-represented on West/Midwest model railroads
- Relief from weathering
- Relief from century-old brick buildings that everyone else has
- Cool factor





# Prototype Examples

## The Vocabulary of Modernism: Typical Architectural Features

- Long, low, horizontal lines
- Large planar walls
- Extensive use of linear rectangles
- Windows horizontally rectangular and often small
- Flat roofs, often with expansive overhangs
- Thin steel, aluminum windows
- Concrete artificial brick, block, sheets
- Minimal exterior ornamentation



# Prototype Examples

Tower at Junction  
Chicago Aurora &  
Elgin Ry.  
1949

*Monster  
Modelworks*



# Rock Island station Hutchinson, KS

## Prototype Examples



# Prototype Examples

Amtrak  
La Junta, CO  
AT&SF  
1950



# Prototype Examples



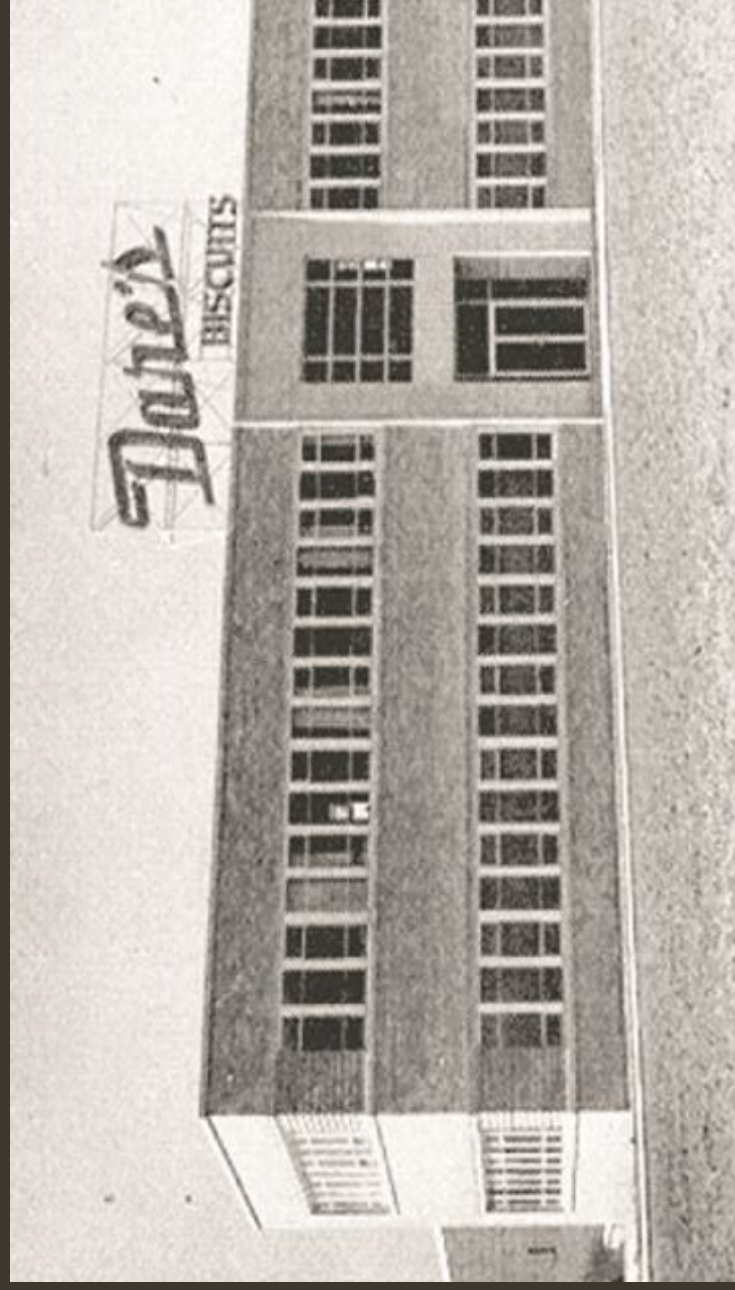
Sascha Brastoff  
Ceramics Factory  
Los Angeles  
A. Quincy Jones  
1953

# Prototype Examples



Fagus Shoe  
Last Factory  
Saxony,  
Germany  
1911  
Walter Gropius  
*Bauhaus*

# Prototype Examples



Dare's Biscuits  
Ontario,  
Canada  
1925

# Prototype Examples



Butler Paper

St. Louis

1962

“cartoon caricature”?

# Prototype Examples



Duffus Ply  
Ontario,  
Canada  
1954

“pike-sized”

Round roof  
unusual



## Prototype Examples

Old postcards  
useful for  
reference  
photos



# Prototype Examples

1948,  
adjacent to  
SF  
Caltrain  
*Obviously  
remodeled  
recently*



# Prototype Examples

Macy's  
Mountain  
View, CA  
1961

“common  
design”



# Prototype Examples

Executive Hotel  
Washington DC  
1952



## Prototype Examples



Johnson's Creamery  
Bloomington, Indiana  
1950

Midwestern climate  
often mandated  
tougher construction

## Prototype Examples



Tum's Building  
St. Louis  
1930

First modernist  
structure in  
downtown St.  
Louis

## Prototype Examples



Barkin-Levin Furniture  
Long Island City, NY – 1958, Ulrich Franzen

# Prototype Examples



Stuart Pharmaceutical Factory, Pasadena, CA, 1965



## Prototype Examples

Capitol Records

Los Angeles

1956

Louis Naidorf

World's first circular  
office building

*Not a “stack of records”*

Inefficient



# Prototype Examples

The  
Seagram  
Building  
New York  
1958  
Mies van  
der Rohe  
&  
Johnson



## Revisiting The Vocabulary:

- Long, low, horizontal lines
- Large planar walls
- Extensive use of linear rectangles
- Windows horizontally rectangular and often small
- Flat roofs
- Thin steel, aluminum windows
- Concrete artificial brick, block, sheets
- Minimal exterior ornamentation



# What's Available in Models?

In HO Scale

# Walthers Interstate Truck Dealership



# Walthers Diesel House



# Walthers Donnie's Drive In



# Monster Modelworks Yard Office (multi-scale)

Roughly like  
the Aurora  
tower



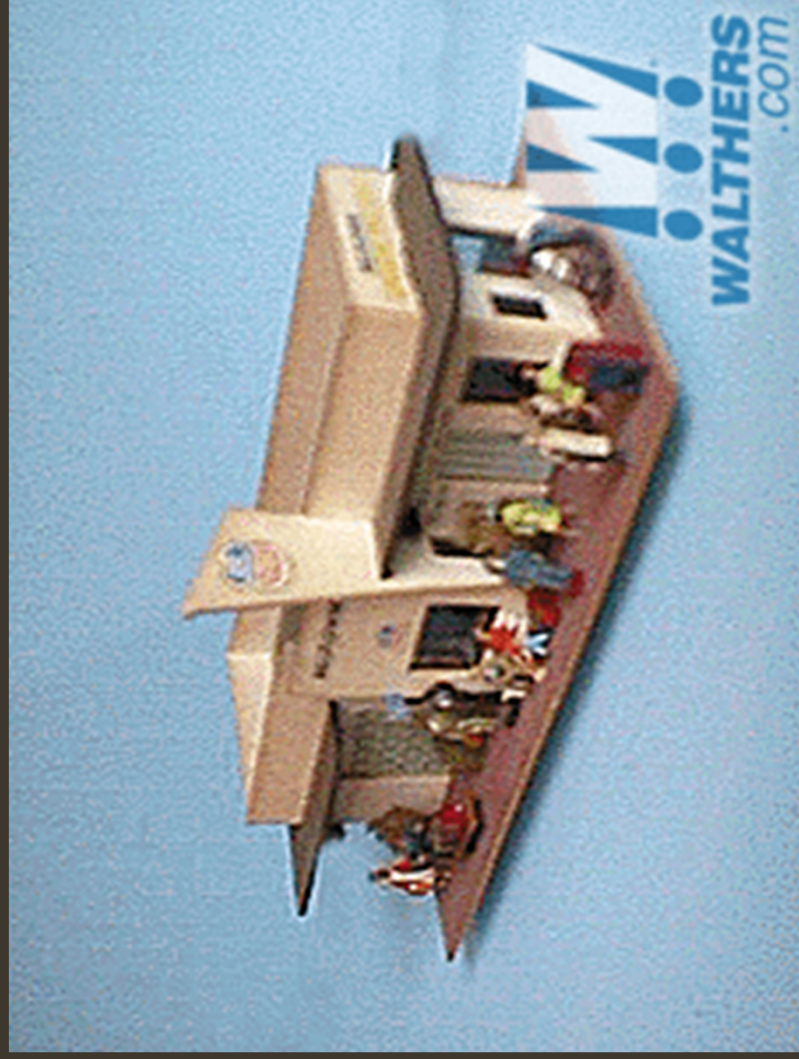


# Rix Products Modern Highway Overpass



Most other Rix products are not strictly mid-century

## Alpine Division Modern Station



Discontinued but sometimes seen at train shows or swap meets.

Many Alpine Division models are suitable.

## Ayres Models Modern Mission-Style Station



Discontinued, swap meet item

Primitive by today's standards and need significant detailing, but the "bones" often are good.

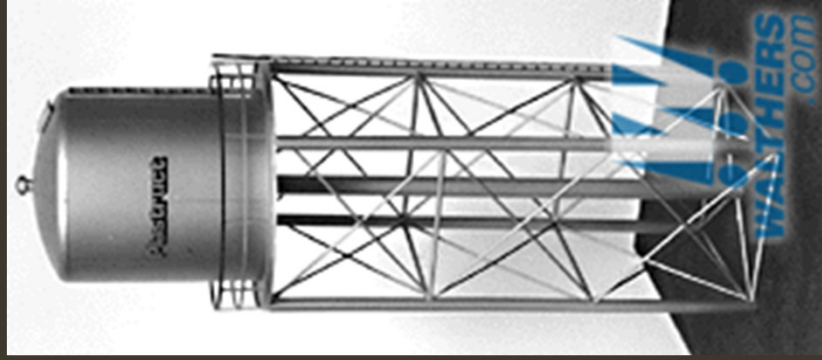
## Picking and Choosing



Blair Line  
Sunset Motel

Signs are  
useful but  
buildings are  
traditional

# Something more mundane



<-

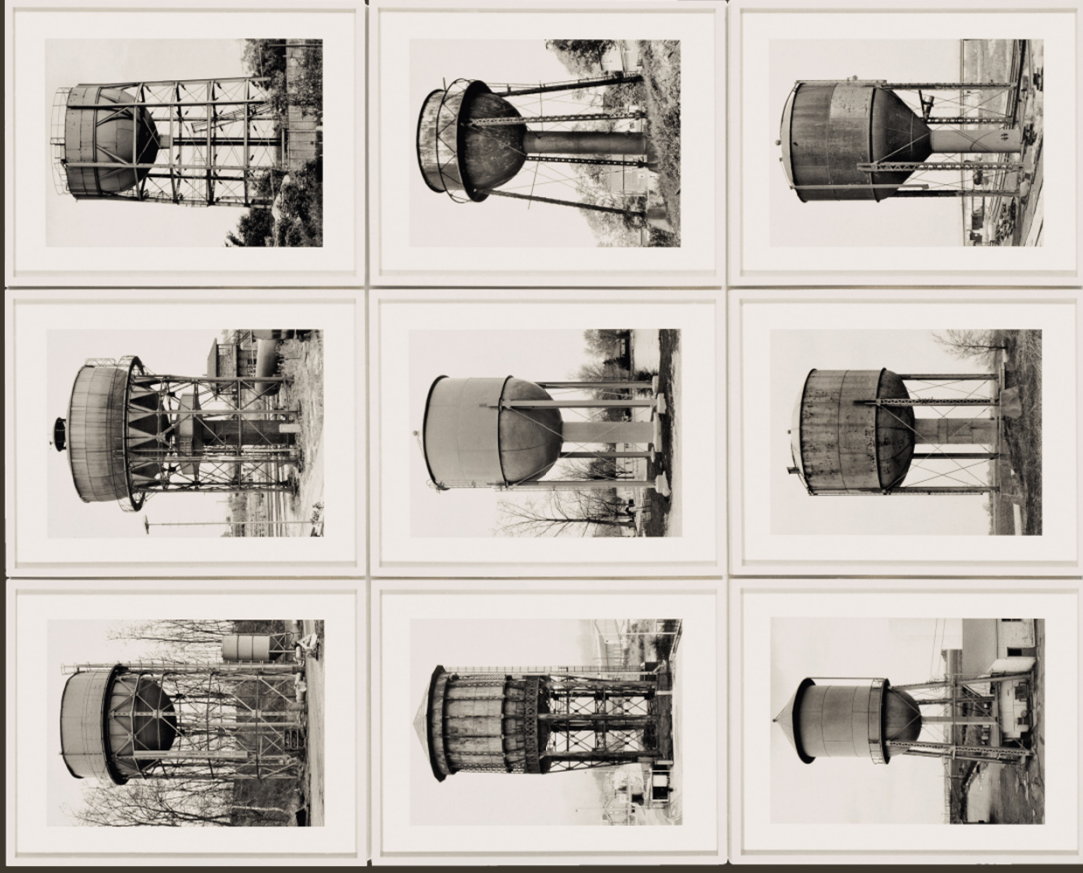
Plastrust Utility Water Tower

Well suited to a large mid-century industrial complex

->

Hilla & Bernd Becher, Germany,  
active 1948-1988

In Guggenheim



O Scale

# Plasticville Apartment House



# O Scale

## Wally's Service Station from Menards



O Scale  
Product  
News

**O**—A classic Shell gas station structure is now part of Menards Collectibles series of O-scale offerings. Wally's Service Station (#279-4431) includes a revolving Shell emblem sign and LED illumination for the sign and the building's interior. The laser-cut building includes hand-painted

decoration and comes with gas pumps, figures, and additional details.

**Menards**

[www.menards.com](http://www.menards.com)

# Walthers Modern Santa Fe Station

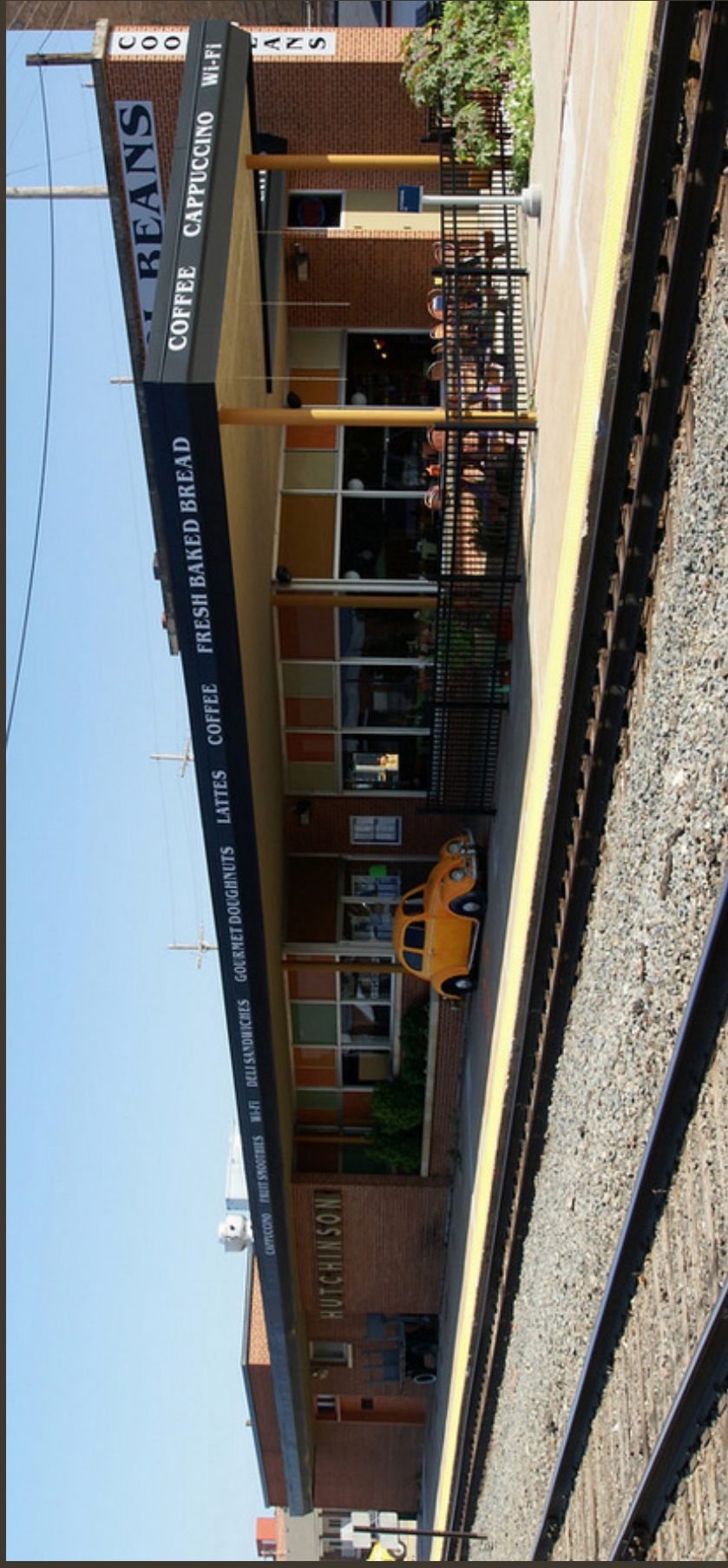
1950  
prototype  
Hutchin-  
son,  
Kansas





# Walthers Modern Santa Fe Station

Still there





# The Kitbash (*in progress*)

Walthers Modern Santa Fe Station

# The Kitbash



My kitbash:

- reverses the rail-served side and the street side
- moves the original street-side tall "fireplace" wall to the new rail side and uses it for signage; this is a distinctive architectural element of the kit and had to be featured
- simplifies the rail-served side to better fit a straight siding; this required fabricating a new wall section

# The Kitbash



# The Kitbash



# The Kitbash



# The Kitbash



# The Kitbash





# The Kitbash



# The Kitbash



## The Kitbash ... Lessons learned

- Styrene is ideal for these buildings
- Correct windows difficult to find as commercial parts but would be suited to 3D printing
- Expansive flat roofs require detailing
- Linear dimensions may be a challenge for small model railroads
- Modeling the 1950s? Then little or no weathering. 😊

## The Kitbash ... Lessons learned

- The Walthers kit is a solid starting point for kitbashing many mid-century buildings; major challenge is irregular outline and matching roof
- Uses clever pin-and-hole alignment for windows, brick facing and window glazing
- Overall parts fit was excellent
- Minimal detail parts beyond the basic building and many surfaces are not textured or detailed

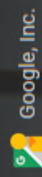


Thank You

[cjpalermo1964@gmail.com](mailto:cjpalermo1964@gmail.com)

# Current Reference Photos

Hutchinson, Kansas



Google, Inc.

Street View - Jun 2012

