



The Great Tectonic Shift

Or, The Pre-Pandemic Social Distancing Project

SIG Weekend January 2021

Jon Schmidt

Nicasio Northern Railway

jontenor@gmail.com

Nicasio Northern Railway

- Late 1920's era Northern California



Nicasio Northern Railway



- Late 1920's era Northern California
- From the Bay to the mountains
- Rural, retail, “rails in the mud” railroad

Nicasio Northern Railway



- Late 1920's era Northern California
- From the Bay to the mountains
- Rural, retail, “rails in the mud” railroad
- Freelanced NWP/NPC
- Small steam, Doodlebug

Nicasio Northern Railway



- Late 1920's era Northern California
- From the Bay to the mountains
- Rural, retail, “rails in the mud” railroad
- Freelanced NWP/NPC
- Small steam, Doodlebug
- In an under-the-garage “basement”

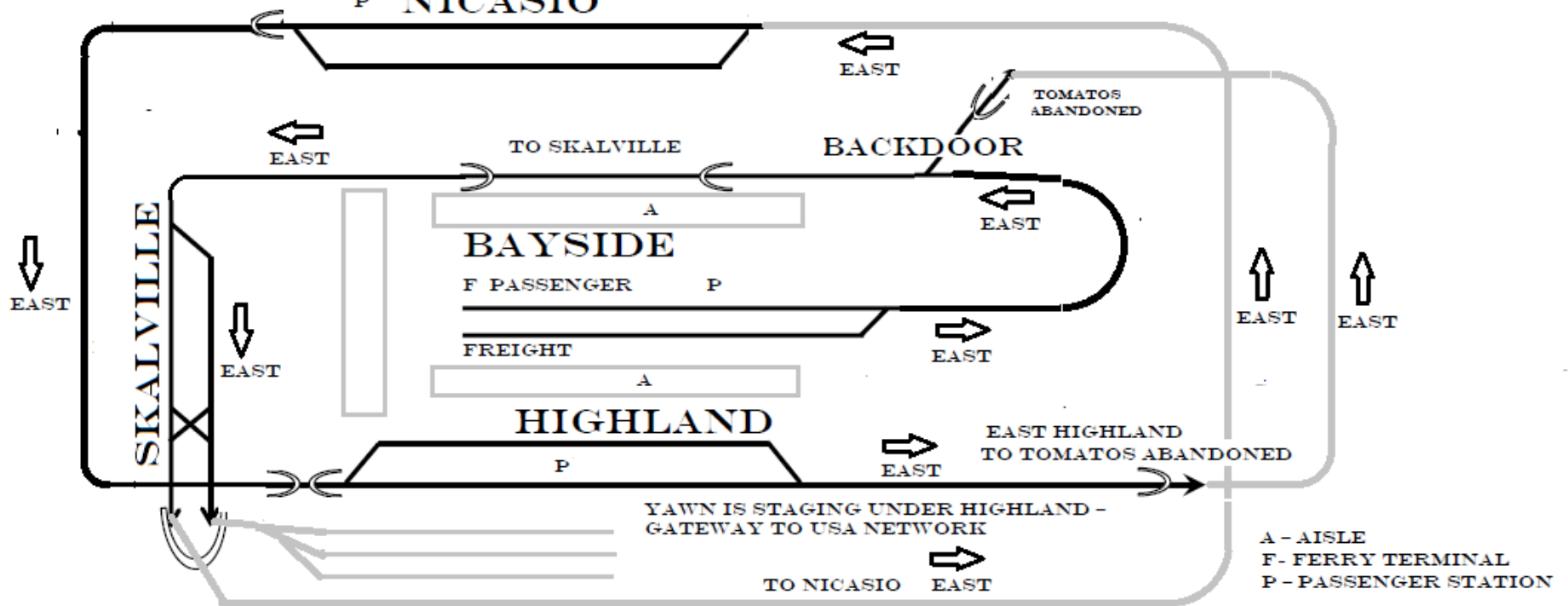
Nicasio Northern Railway (Original)



Nicasio Northern Railway (Original)

NICASIO NORTHERN RAILWAY

P NICASIO



Nicasio Northern Railway

(Original)

- Built for operations
- Freight and passenger
- 8 Daily Passenger trains
- 4 Through freights
- Several locals
- Yardmaster, dispatcher, crews (usually 6 folks)

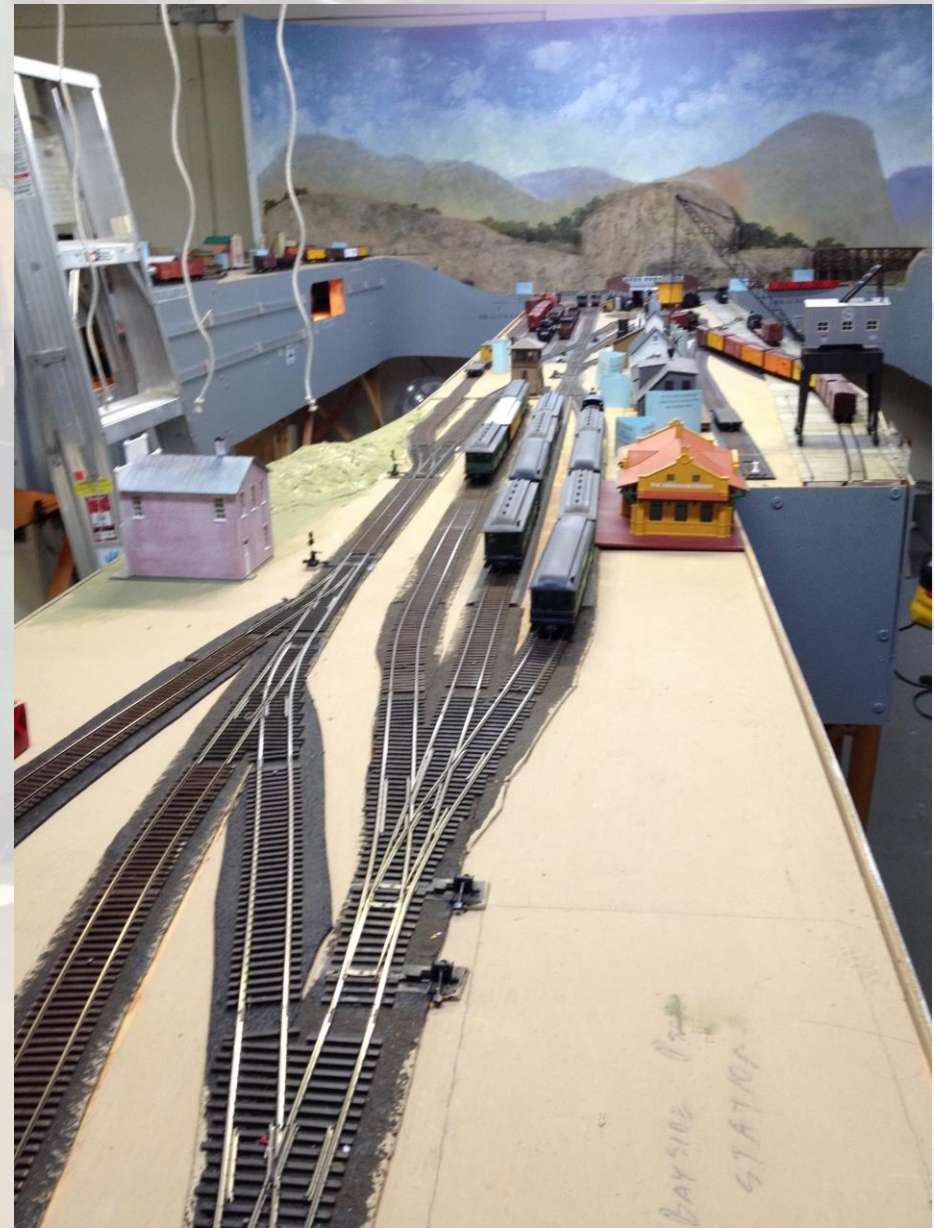
Nicasio Northern Railway

(Original)

- Bayside
 - Freight yard
 - Engine facility
 - Passenger station & yard
 - Ferry landing and wharf
 - Industries



Nicasio Northern Railway - Bayside



Nicasio Northern Railway

(Original)

- Backdoor
- Skalville
- Nicasio



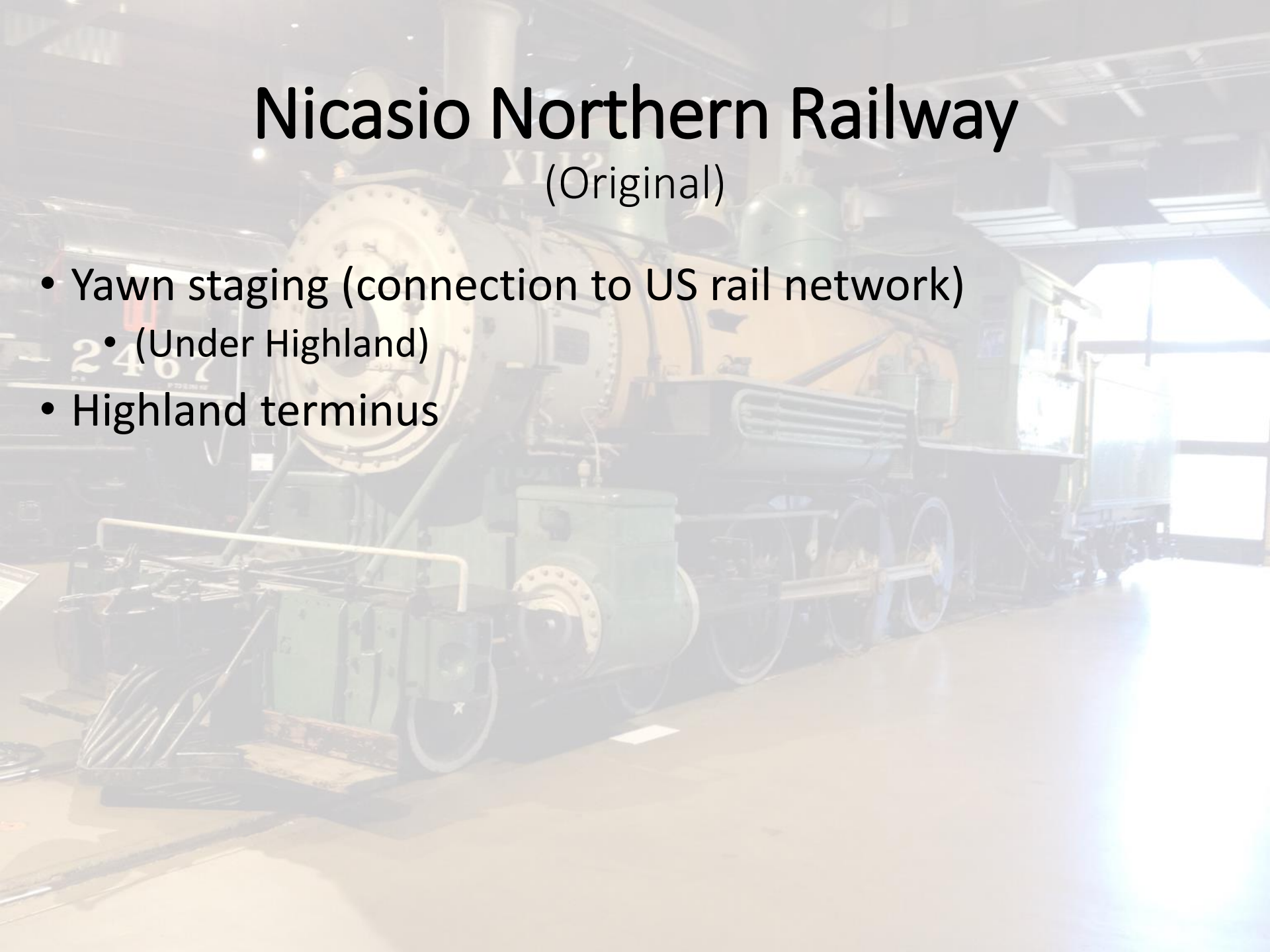
Backdoor - Nicasio - Skalville



Nicasio Northern Railway

(Original)

- Yawn staging (connection to US rail network)
 - (Under Highland)
- Highland terminus



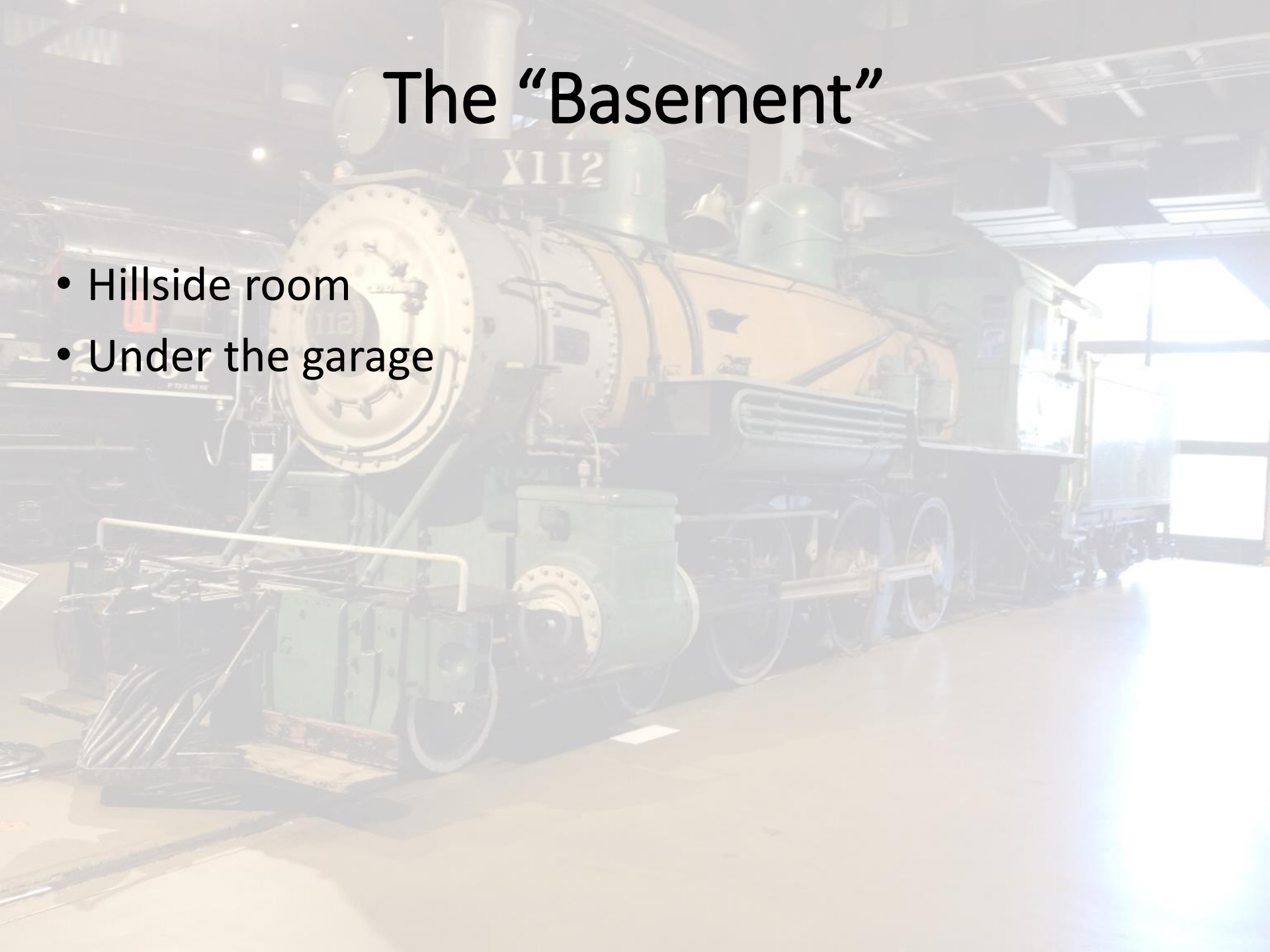
Highland

Yawn



The “Basement”

- Hillside room
- Under the garage

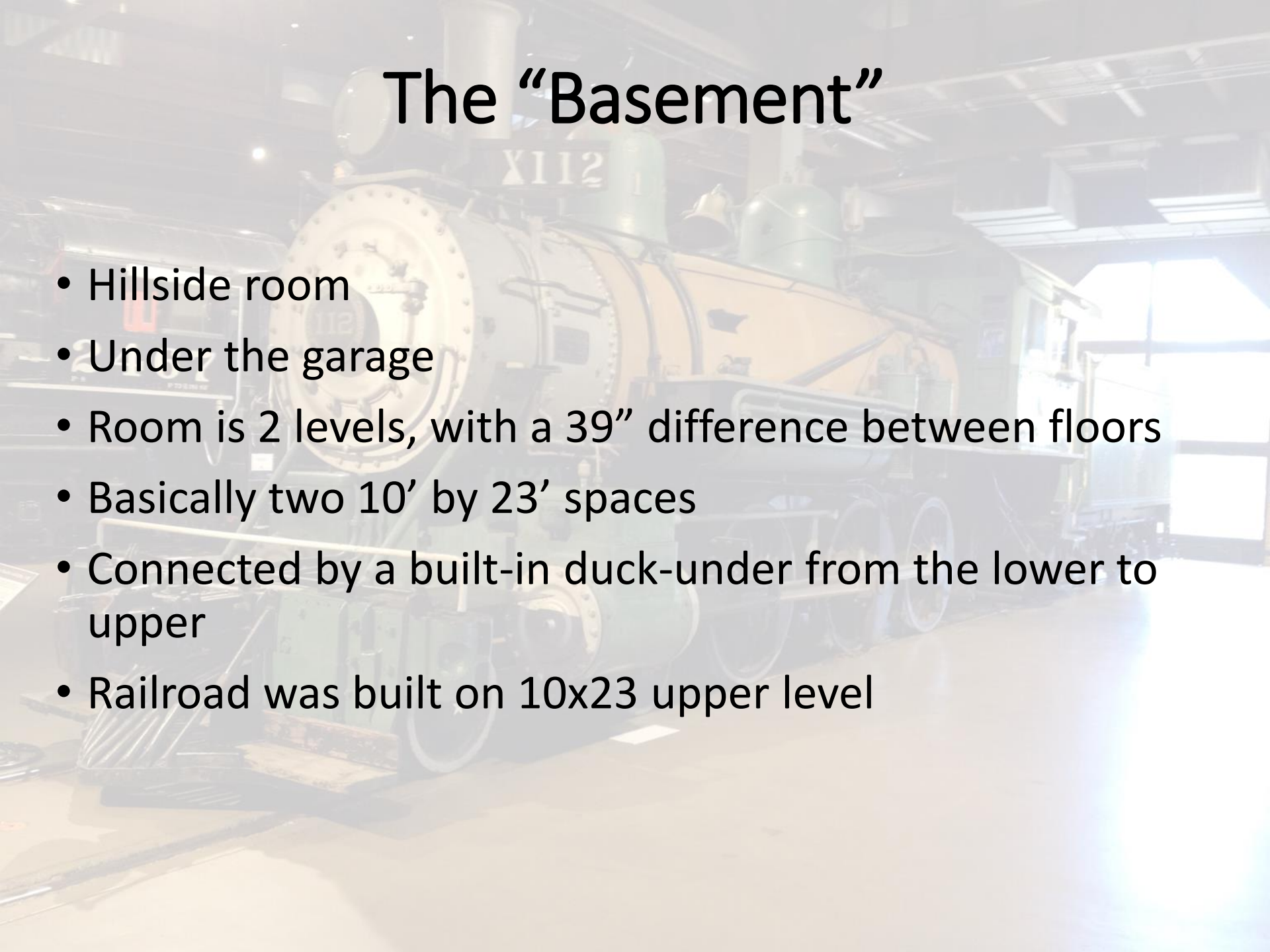


The “Basement”



- Hillside room
- Under the garage
- Room is 2 levels, with a 39” difference between floors
- Basically two 10’ by 23’ spaces

The “Basement”



- Hillside room
- Under the garage
- Room is 2 levels, with a 39” difference between floors
- Basically two 10’ by 23’ spaces
- Connected by a built-in duck-under from the lower to upper
- Railroad was built on 10x23 upper level

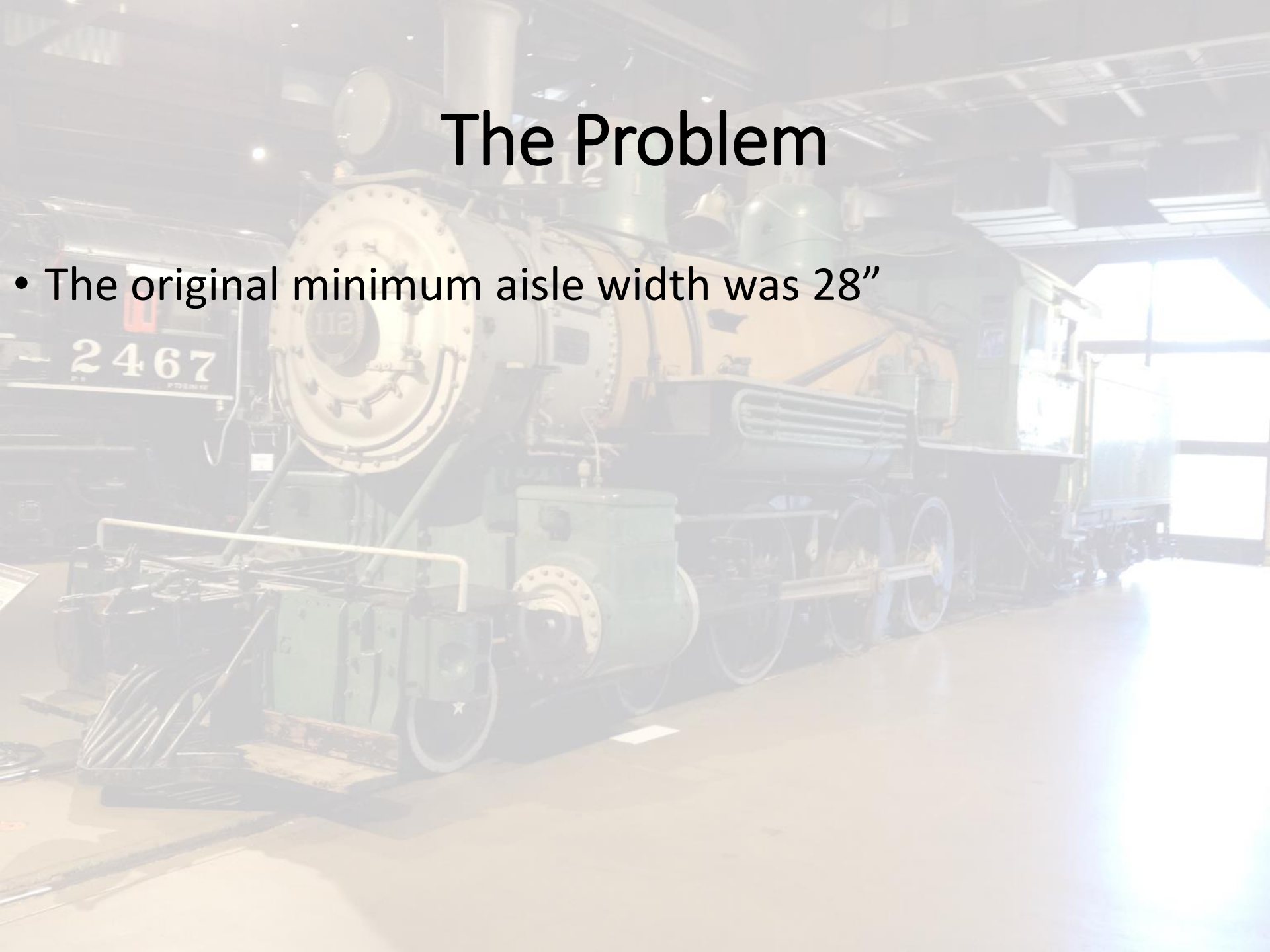


The "Basement"



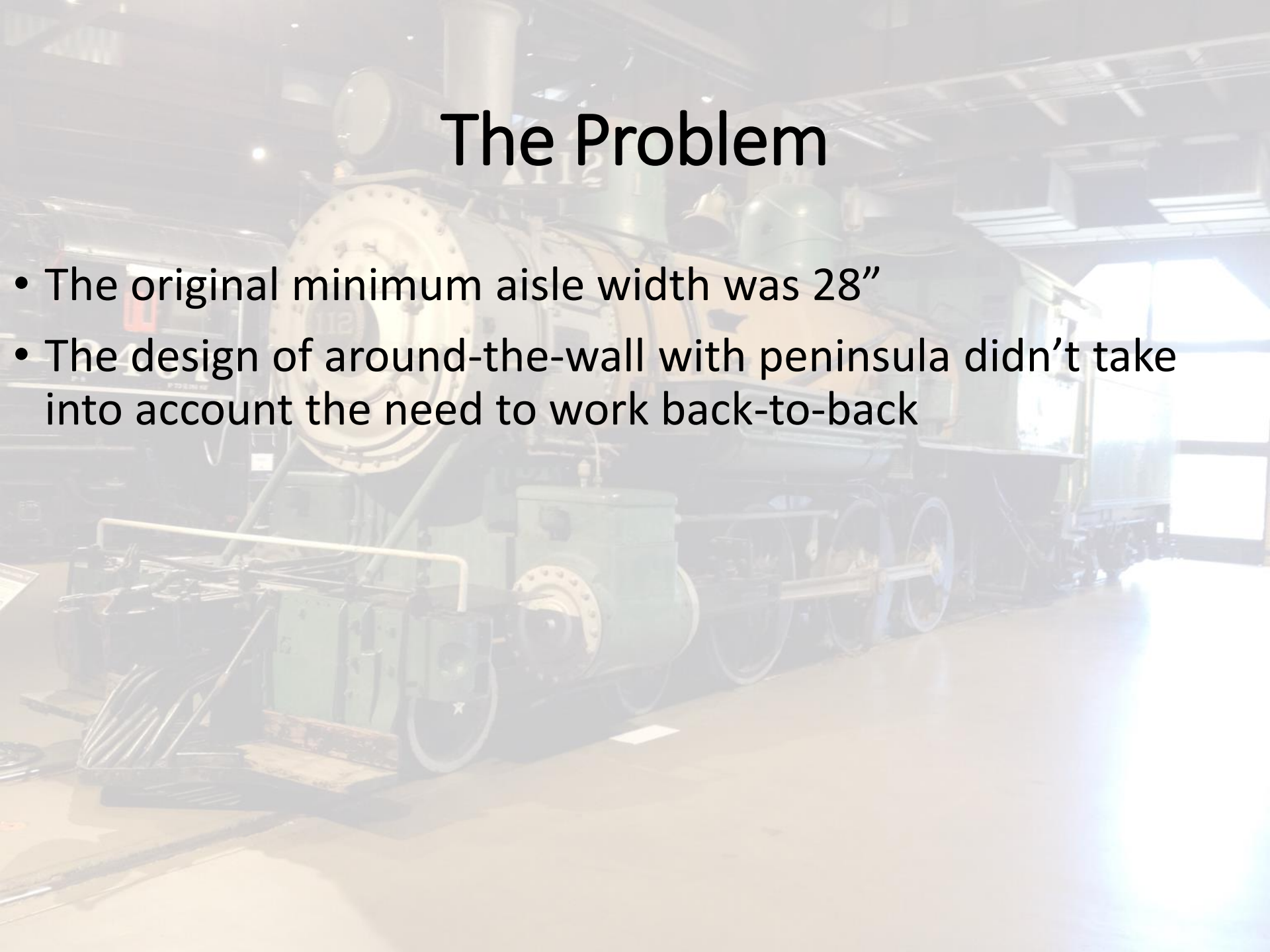
The Problem

- The original minimum aisle width was 28"



The Problem

- The original minimum aisle width was 28"
- The design of around-the-wall with peninsula didn't take into account the need to work back-to-back

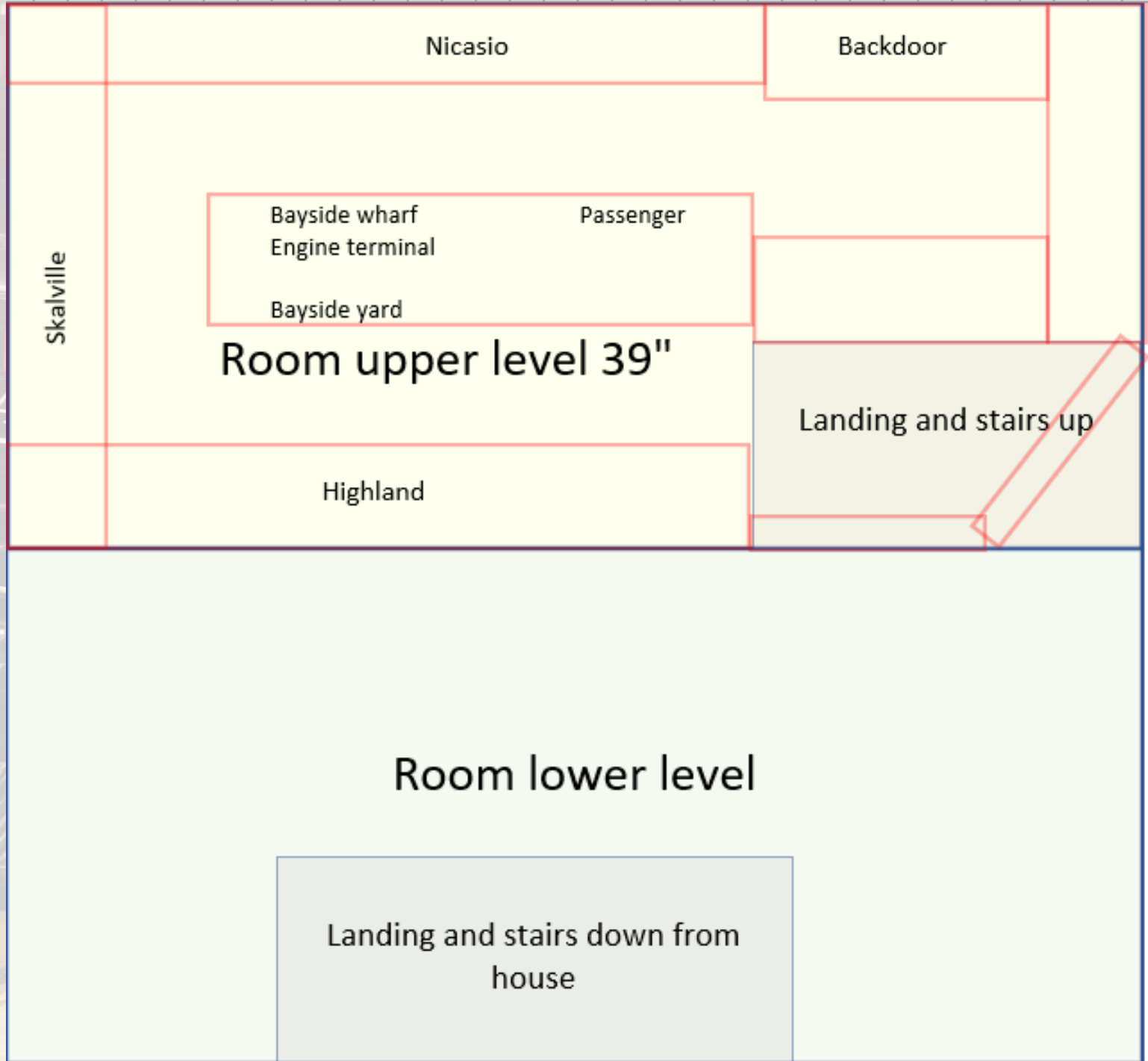


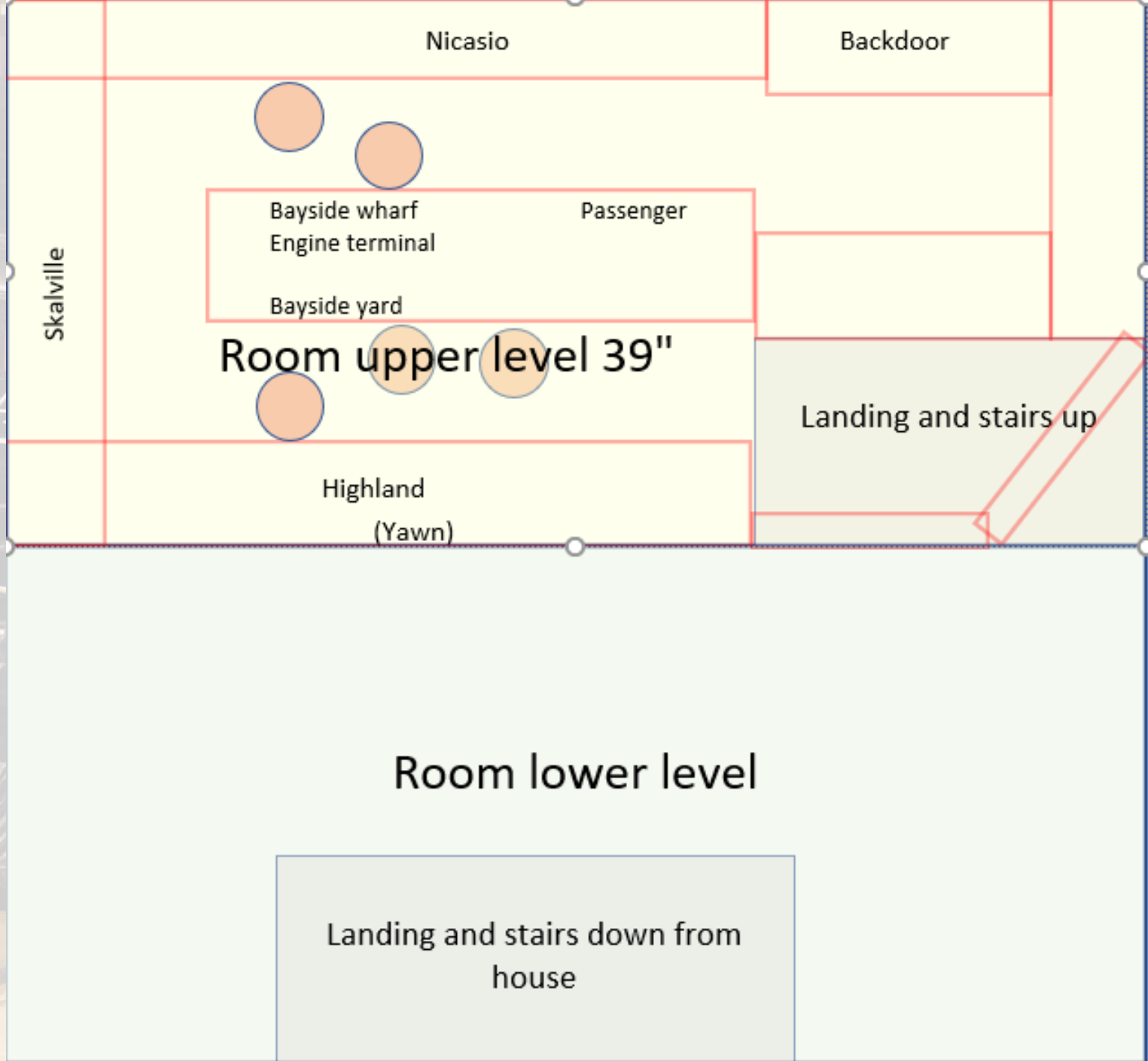
The Problem

- The original minimum aisle width was 28”
- The design of around-the-wall with peninsula didn’t take into account the need to work back-to-back
- Maybe if I only had skinny crews
 - Yea, right!
 - Then I couldn’t work my own railroad

The Problem

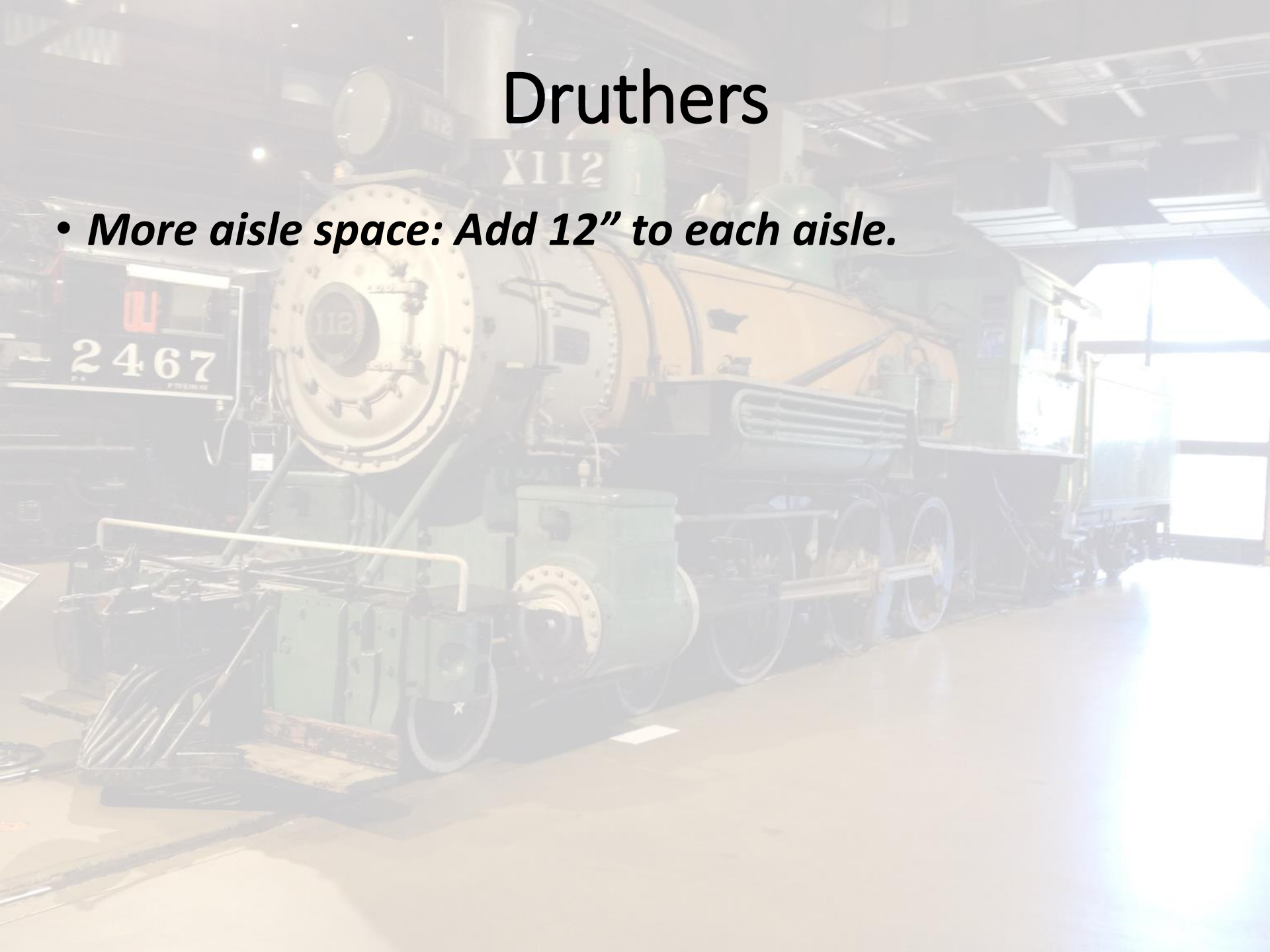
- The original minimum aisle width was 28”
- The design of around-the-wall with peninsula didn’t take into account the need to work back-to-back
- Maybe if I only had skinny crews
 - Yea, right!
 - Then I couldn’t work my own railroad
- Something had to give, and it wasn’t our waistlines





Druthers

- *More aisle space: Add 12" to each aisle.*



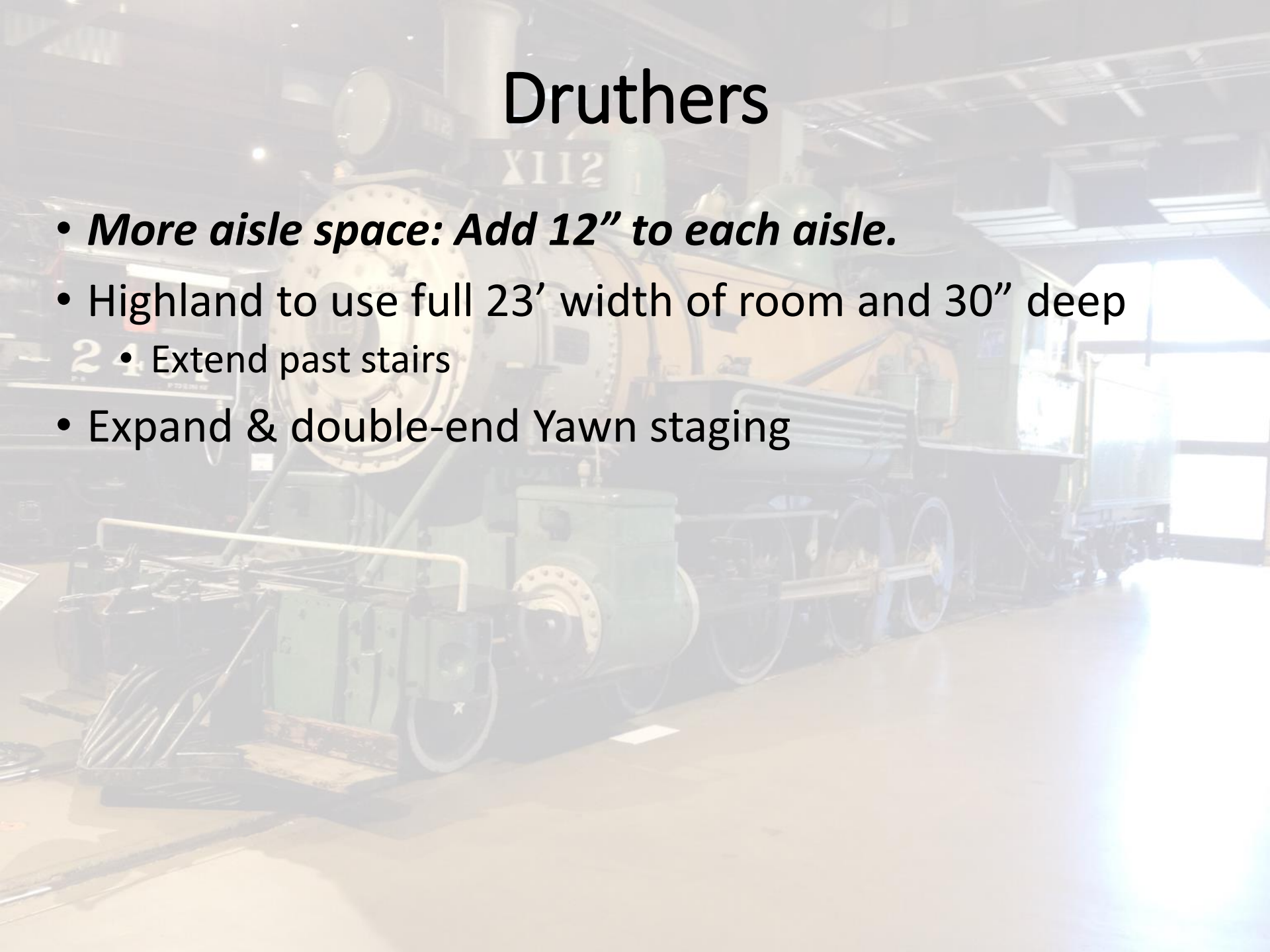
Druthers

- ***More aisle space: Add 12" to each aisle.***
- Highland to use full 23' width of room and 30" deep
 - Extend past stairs



Druthers

- ***More aisle space: Add 12" to each aisle.***
- Highland to use full 23' width of room and 30" deep
 - Extend past stairs
- Expand & double-end Yawn staging



Druthers

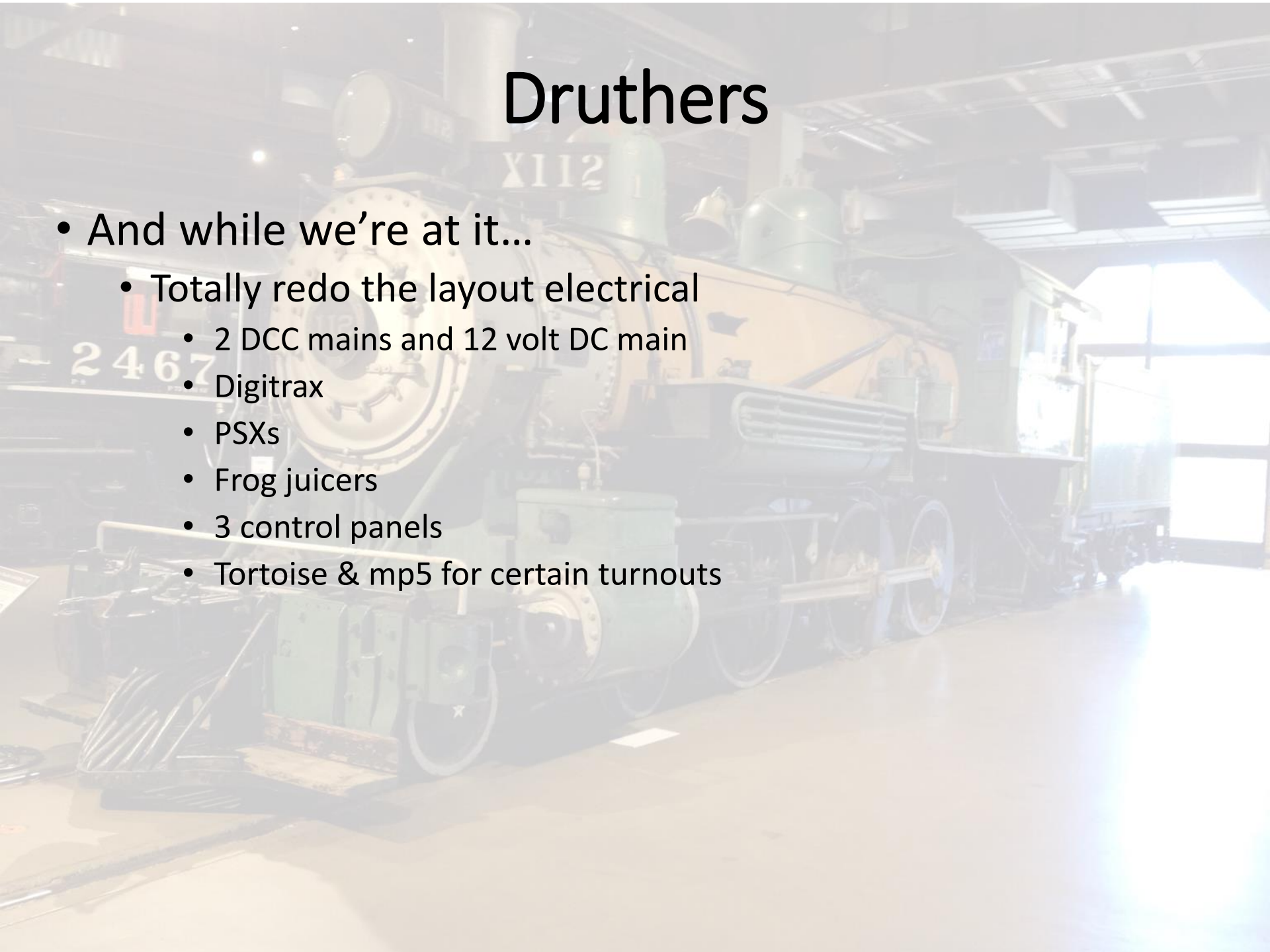
- ***More aisle space: Add 12" to each aisle.***
- Highland to use full 23' width of room and 30" deep
 - Extend past stairs
- Expand & double-end Yawn staging
- Wyes wherever possible to support staging

Druthers

- ***More aisle space: Add 12" to each aisle.***
- Highland to use full 23' width of room and 30" deep
 - Extend past stairs
- Expand & double-end Yawn staging
- Wyes wherever possible to support staging
- Use the south wall?
 - New staging?
 - Wye tails
 - Downside: 90+'' elevation over floor

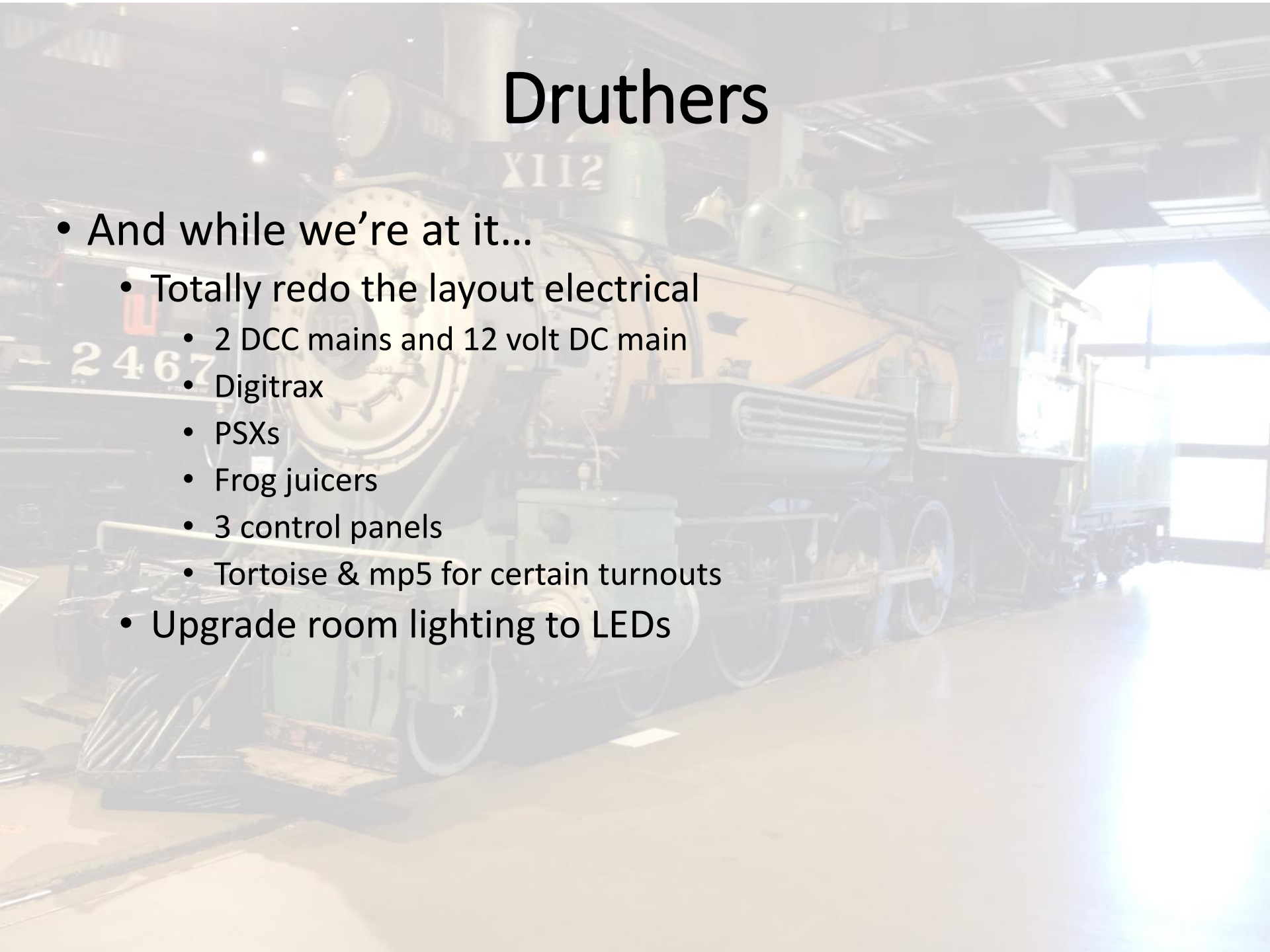
Druthers

- And while we're at it...
 - Totally redo the layout electrical
 - 2 DCC mains and 12 volt DC main
 - Digitrax
 - PSXs
 - Frog juicers
 - 3 control panels
 - Tortoise & mp5 for certain turnouts



Druthers

- And while we're at it...
 - Totally redo the layout electrical
 - 2 DCC mains and 12 volt DC main
 - Digitrax
 - PSXs
 - Frog juicers
 - 3 control panels
 - Tortoise & mp5 for certain turnouts
 - Upgrade room lighting to LEDs



Druthers

- And while we're at it...
 - Totally redo the layout electrical
 - 2 DCC mains and 12 volt DC main
 - Digitrax
 - PSXs
 - Frog juicers
 - 3 control panels
 - Tortoise & mp5 for certain turnouts
 - Upgrade room lighting to LEDs
 - Stairway railings

Druthers

- And while we're at it...
 - Totally redo the layout electrical
 - 2 DCC mains and 12 volt DC main
 - Digitrax
 - PSXs
 - Frog juicers
 - 3 control panels
 - Tortoise & mp5 for certain turnouts
 - Upgrade room lighting to LEDs
 - Stairway railings
 - Organize shelving and workbench space
 - Clean up the joint!

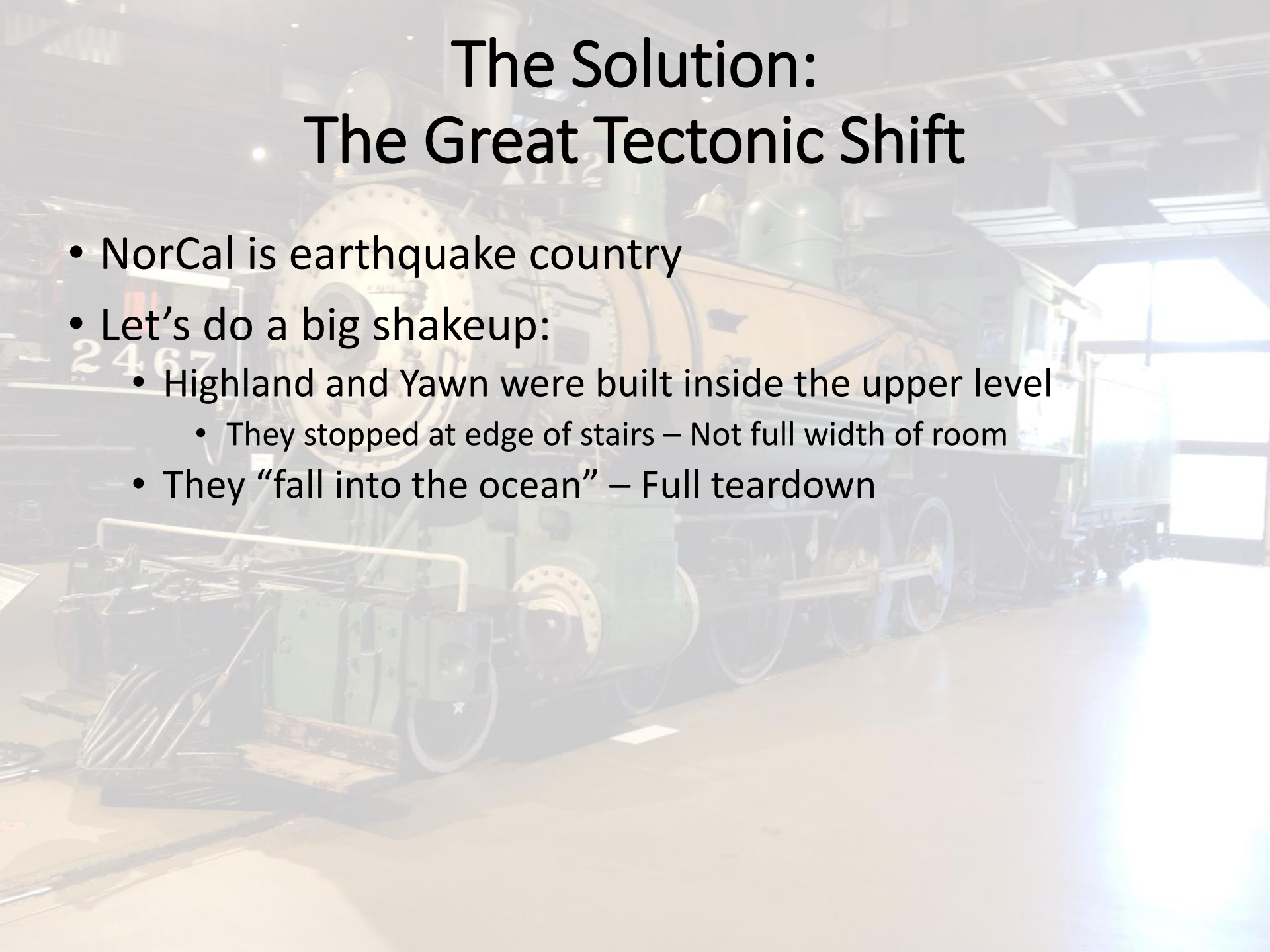
The Solution: The Great Tectonic Shift

- NorCal is earthquake country
- Let's do a big shakeup:
 - Highland and Yawn were built inside the upper level
 - They stopped at edge of stairs – Not full width of room



The Solution: The Great Tectonic Shift

- NorCal is earthquake country
- Let's do a big shakeup:
 - Highland and Yawn were built inside the upper level
 - They stopped at edge of stairs – Not full width of room
 - They “fall into the ocean” – Full teardown

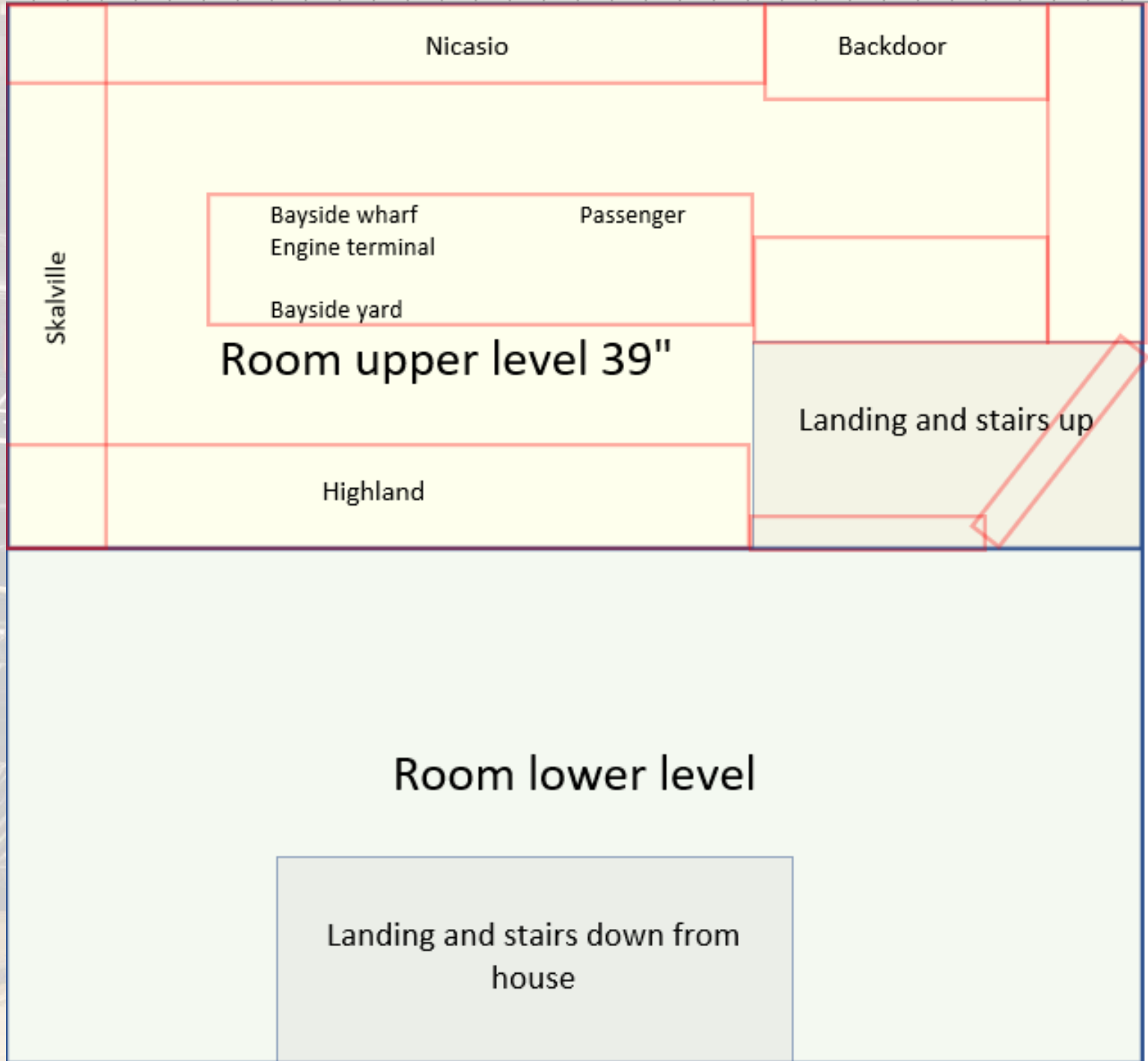


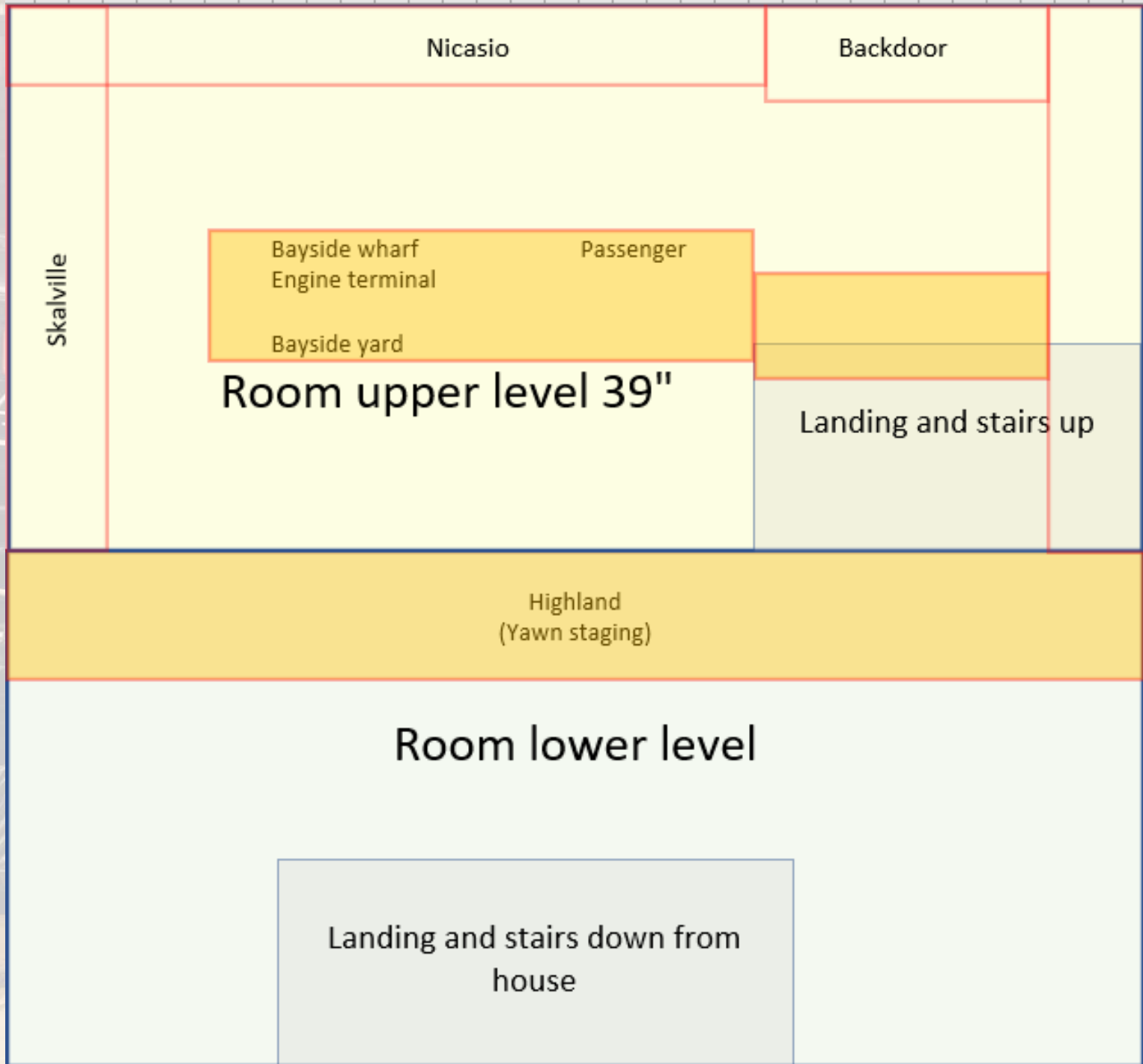
The Solution: The Great Tectonic Shift

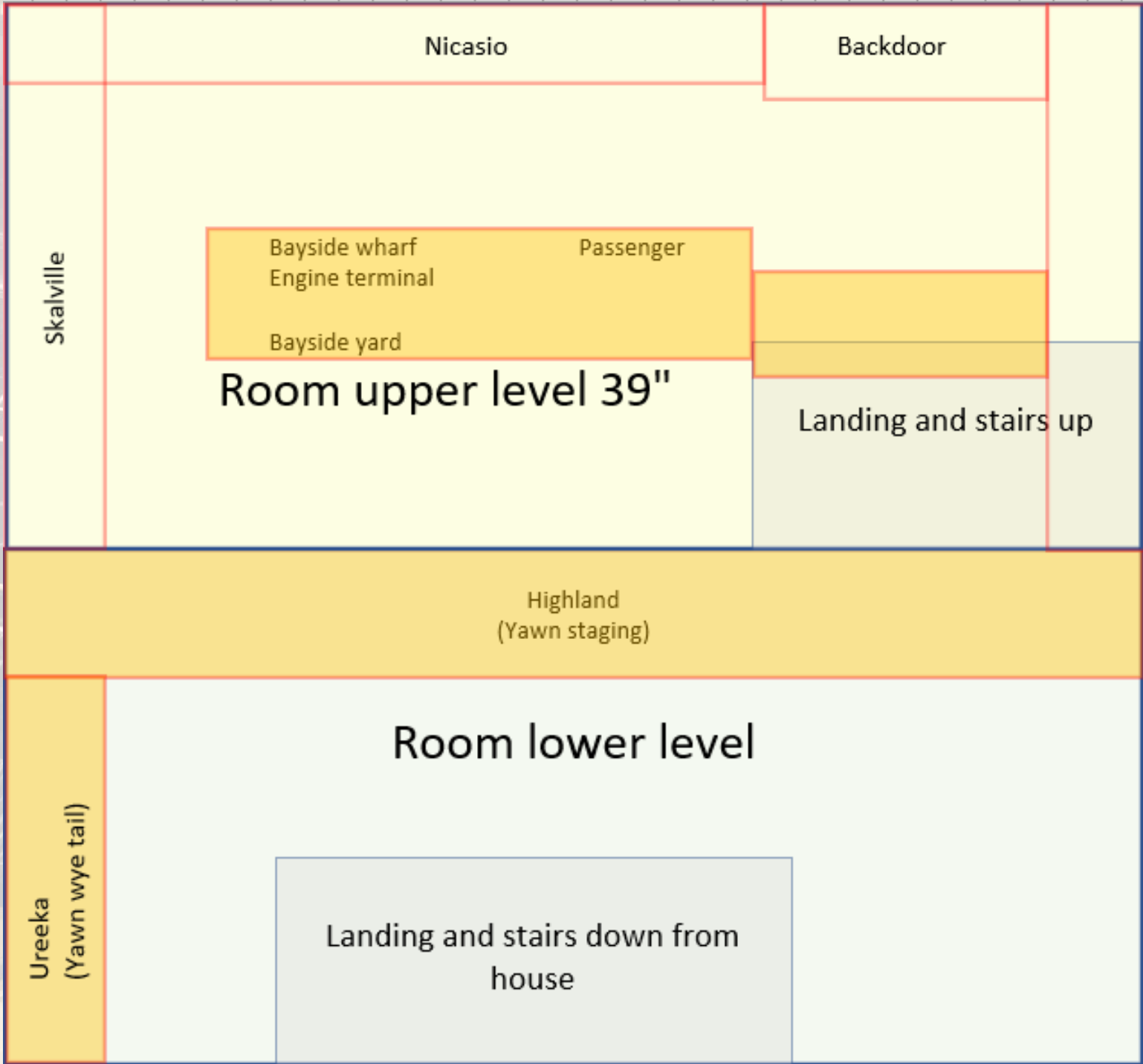
- NorCal is earthquake country
- Let's do a big shakeup:
 - Highland and Yawn were built inside the upper level
 - They stopped at edge of stairs – Not full width of room
 - They “fall into the ocean” – Full teardown
 - Benchwork moves out over lower floor 174 (scale) feet
 - Grows to 217 (scale) feet wide (30”)
 - Grows to full width of room

The Solution: The Great Tectonic Shift

- NorCal is earthquake country
- Let's do a big shakeup:
 - Highland and Yawn were built inside the upper level
 - They stopped at edge of stairs – Not full width of room
 - They “fall into the ocean” – Full teardown
 - Benchwork moves out over lower floor 174 (scale) feet
 - Grows to 217 (scale) feet wide (30”)
 - Grows to full width of room
 - Bayside peninsula moves 87 (scale) feet
 - Each aisle gains 12”







Nicasio Northern Railway Post-Quake



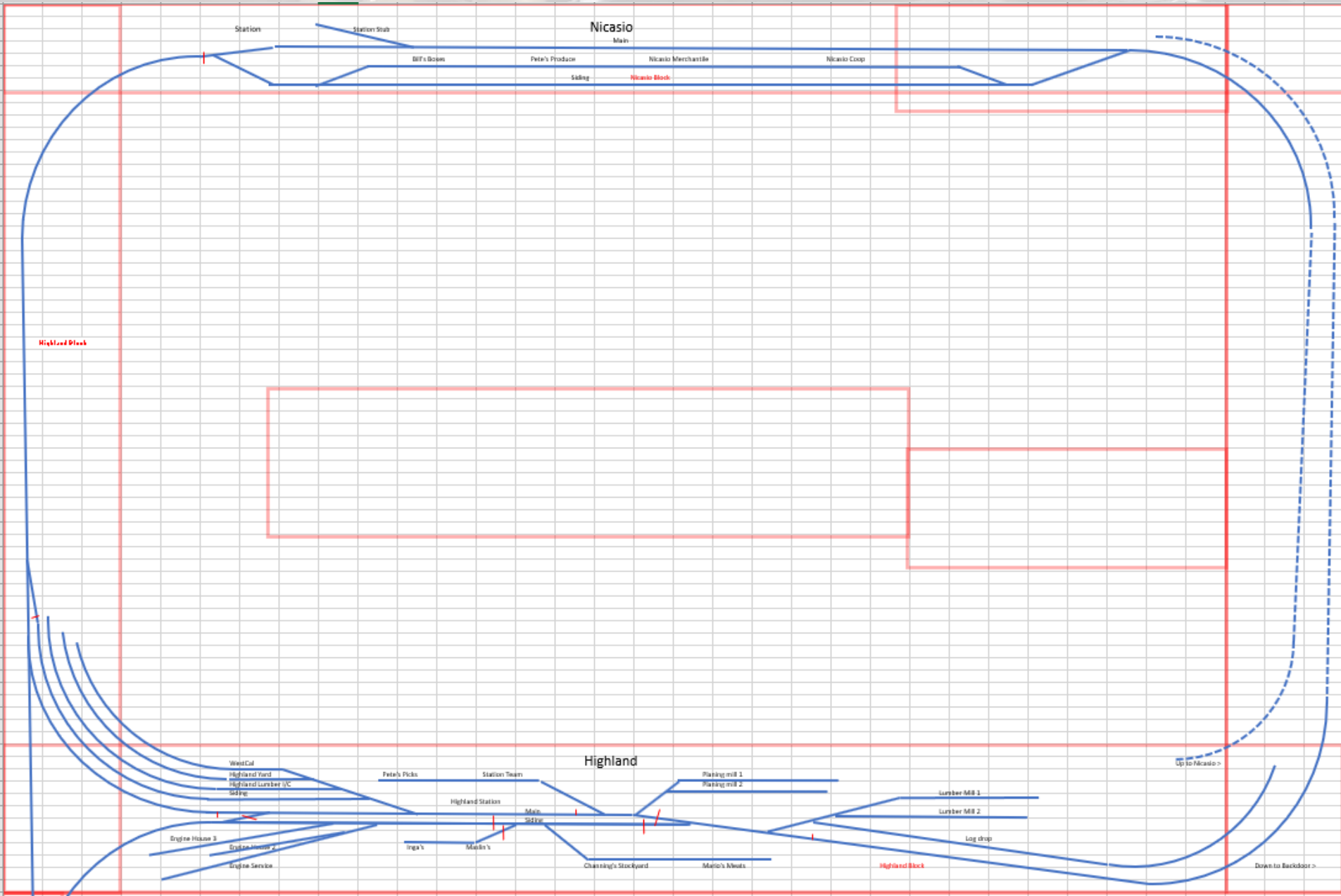
Nicasio Northern Railway Post-Quake



Nicasio Northern Railway Post-Quake

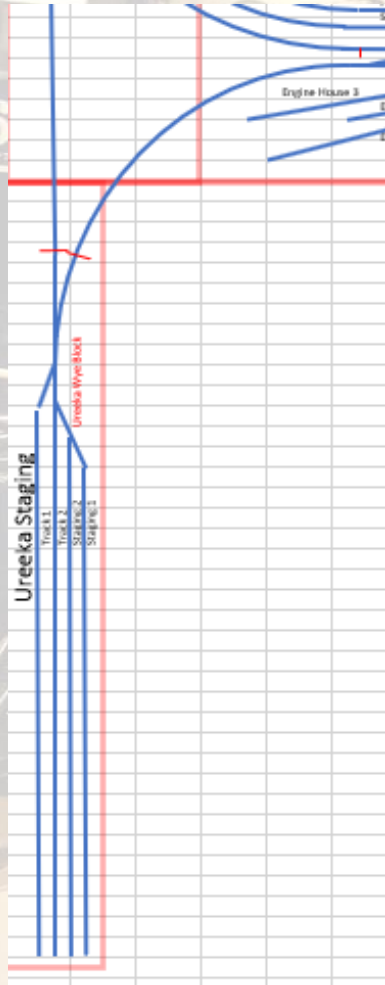


Upper Level



South Wall

Upper level – Ureeka staging

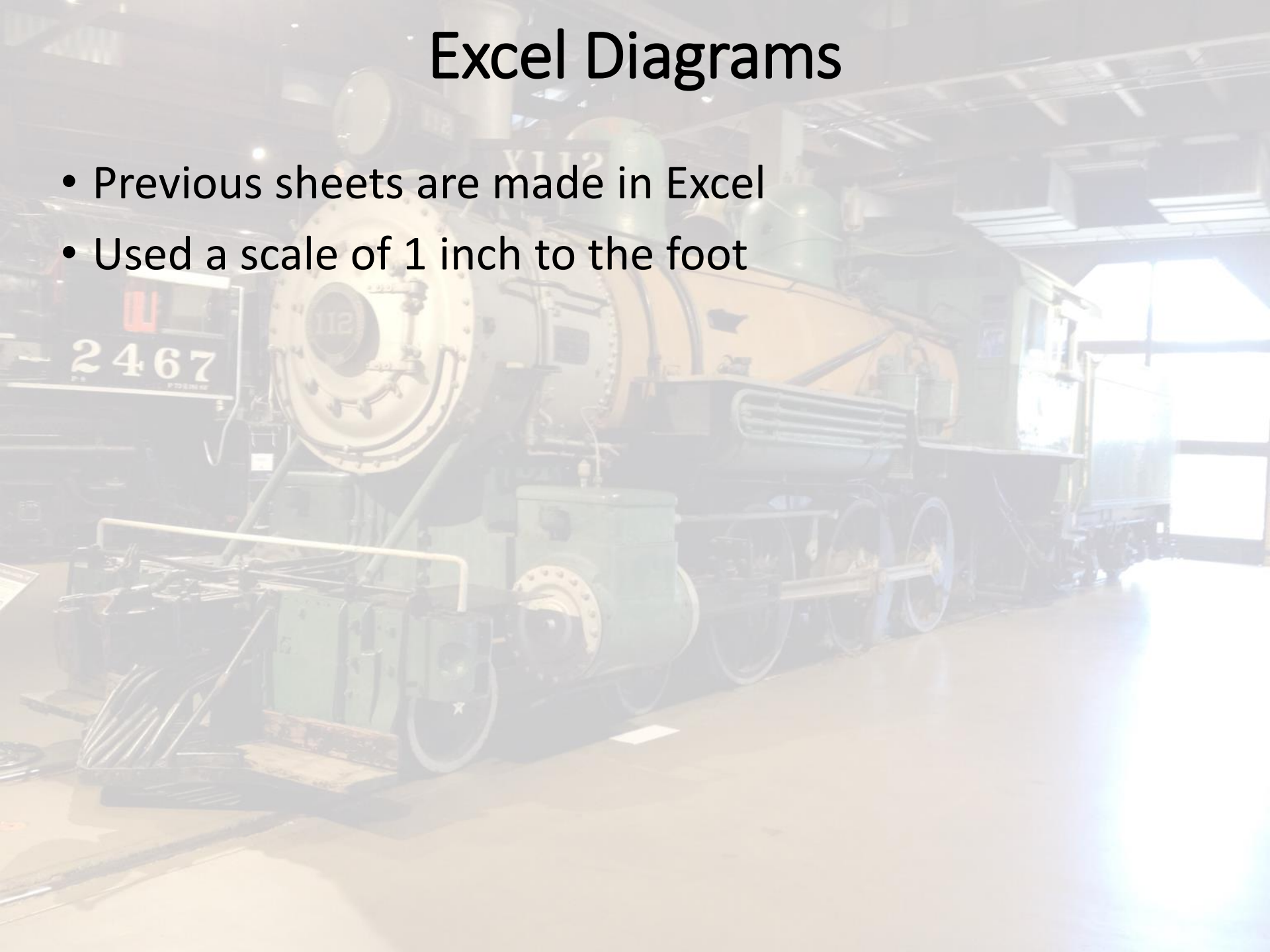


Lower level – Yawn wye tail



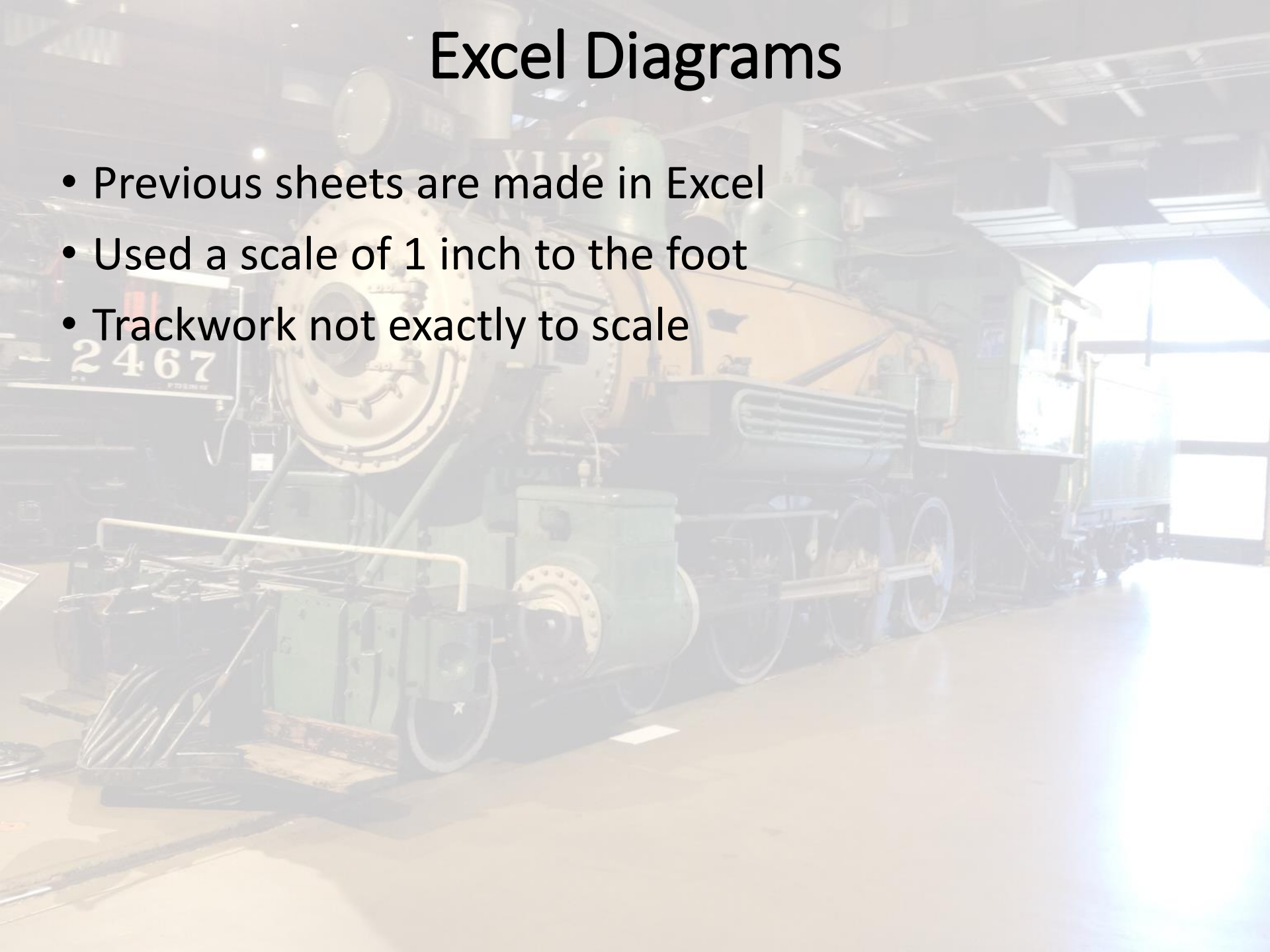
Excel Diagrams

- Previous sheets are made in Excel
- Used a scale of 1 inch to the foot



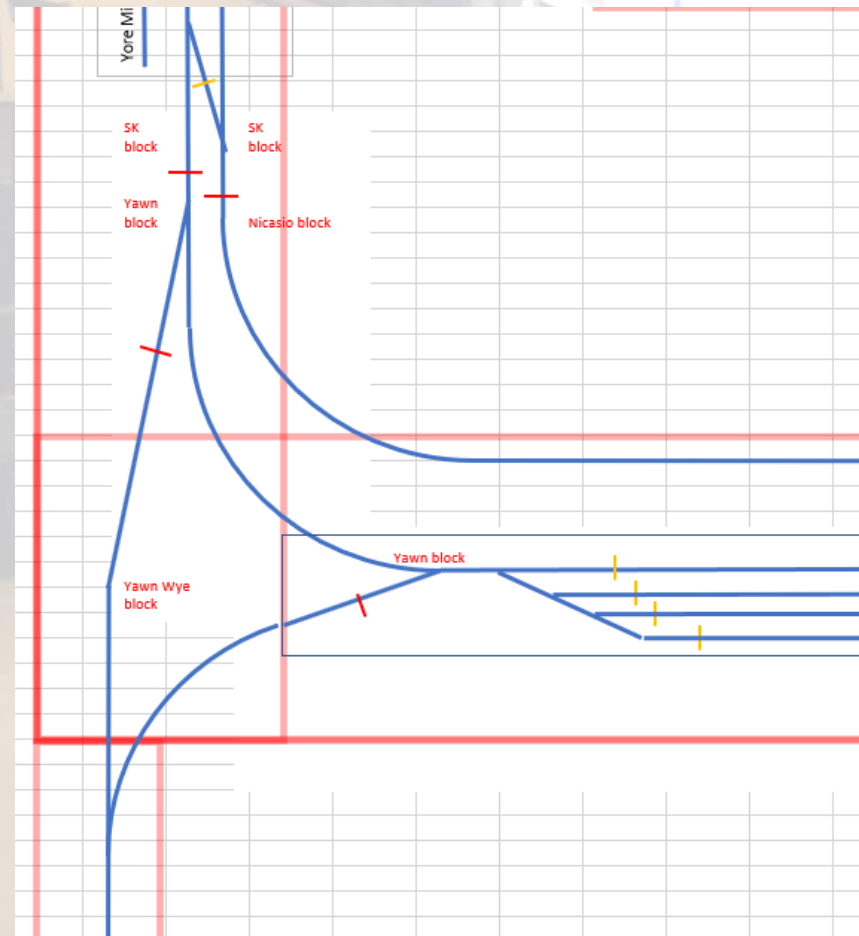
Excel Diagrams

- Previous sheets are made in Excel
- Used a scale of 1 inch to the foot
- Trackwork not exactly to scale

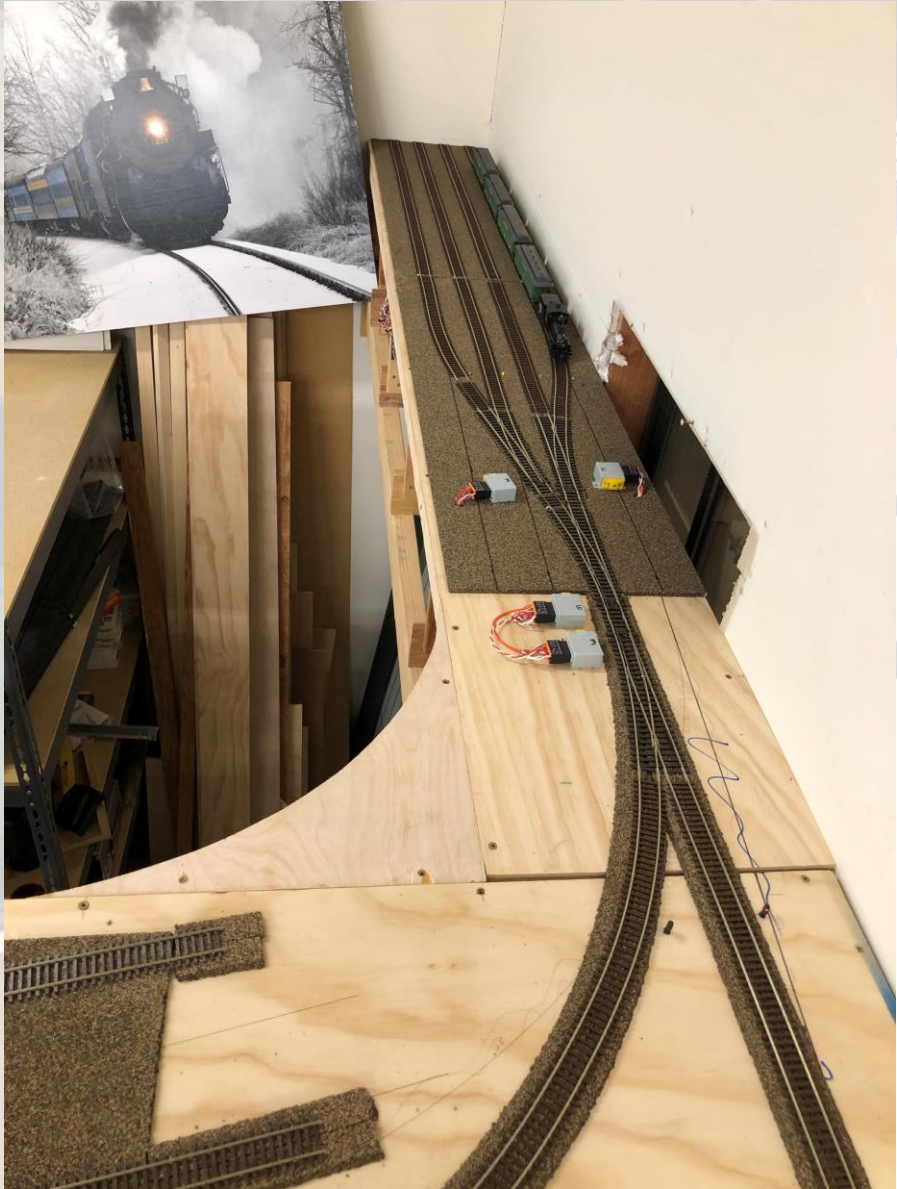


Excel Diagrams

- Previous sheets are made in Excel
- Used a scale of 1 inch to the foot
- Trackwork not exactly to scale
- “Document of Record”
 - Benchwork
 - Track
 - Industries
 - Gaps and blocks

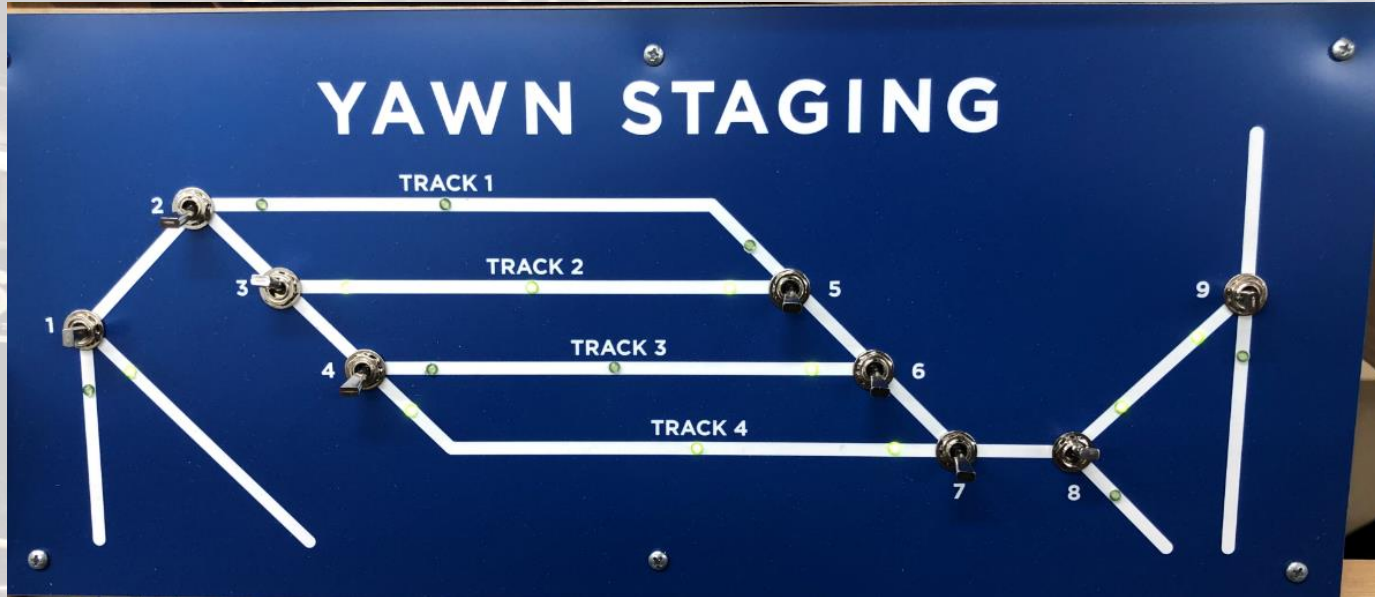


New Construction: Ureeka & Yawn



Control Panels

FastSigns Plastic Engraving From Word/PDF



Control Panels



New Construction: Highland

Highland now goes full width of room

-- Including over the stairs

Highland Lumber is the industry over the stairs – workable from upper level



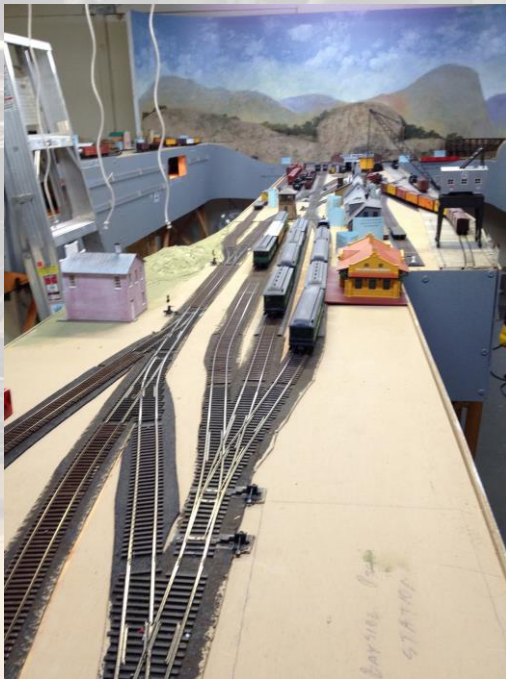
Operations Notes

- Passenger ops
 - By Timetable
 - Commuter action – Ureeka to San Francisco
 - Via Ferry
 - “Shopper” midday Highland – Bayside - Highland



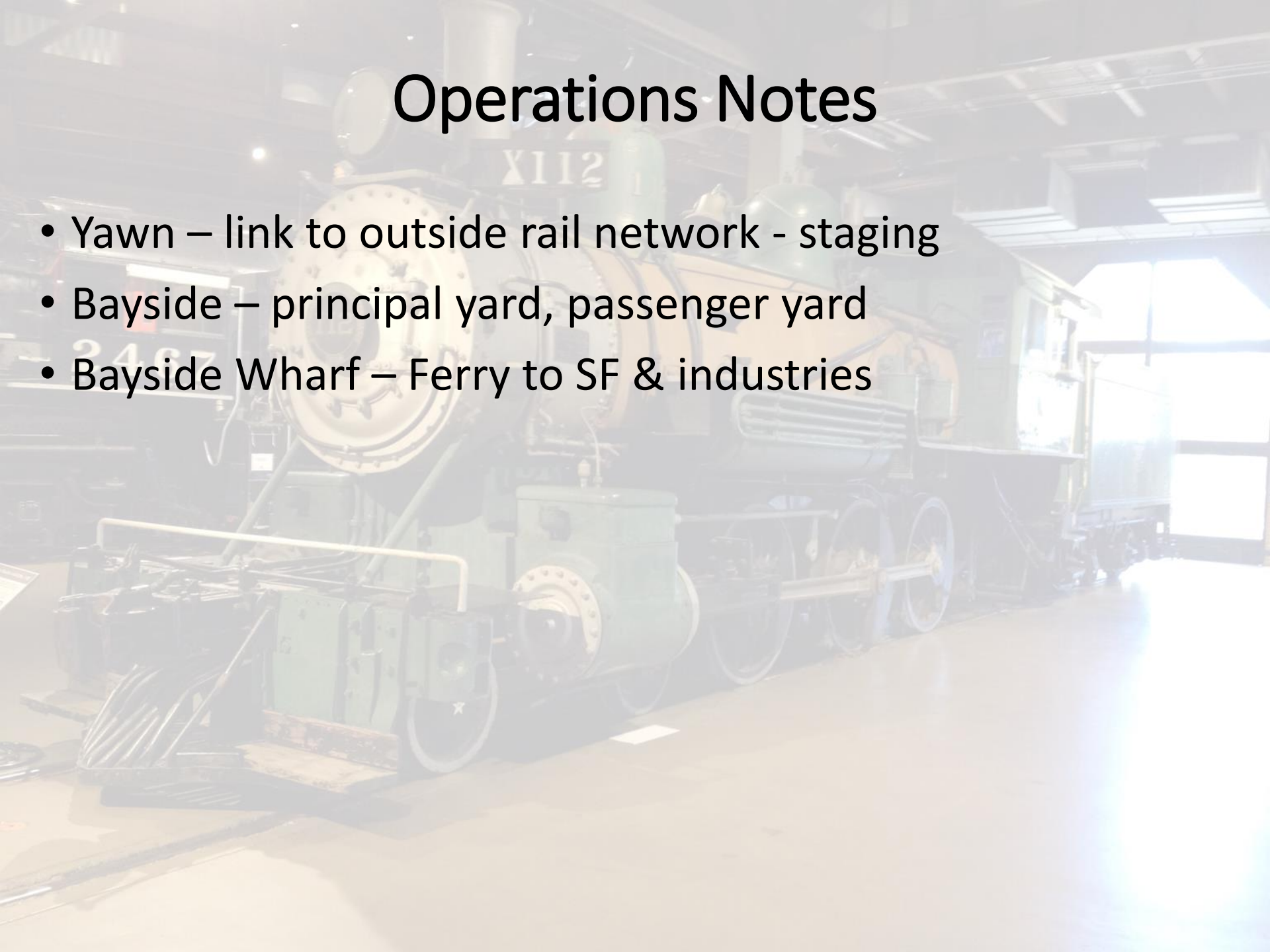
Operations Notes

- Passenger ops
 - Commuters – Trains meet the Ferry to San Francisco
 - At the Wharf - Morning and evening
 - Mail trains to/from Yawn
 - With RPOs going “up the hill”
- Morning & evening “dance” at Bayside

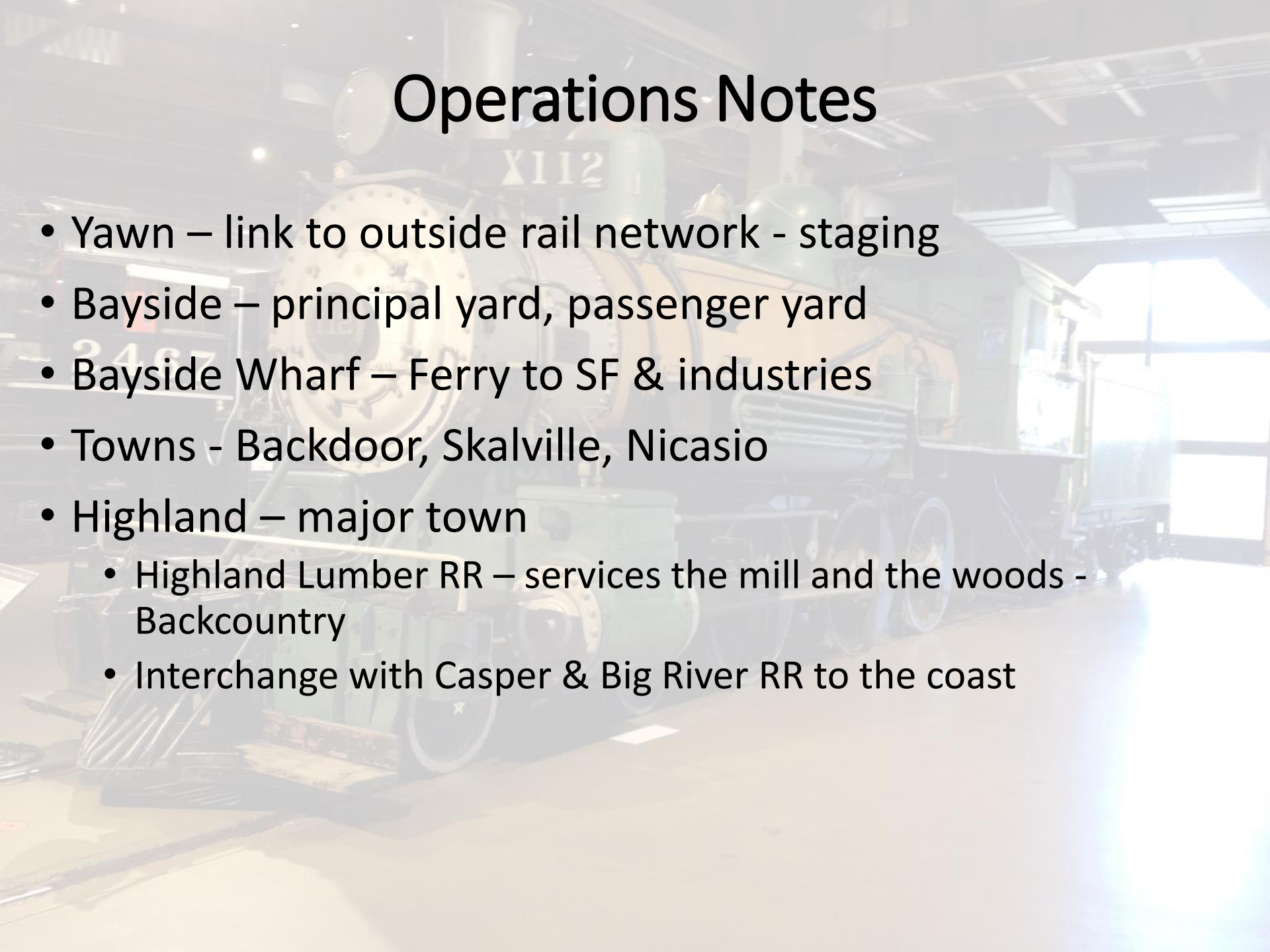


Operations Notes

- Yawn – link to outside rail network - staging
- Bayside – principal yard, passenger yard
- Bayside Wharf – Ferry to SF & industries

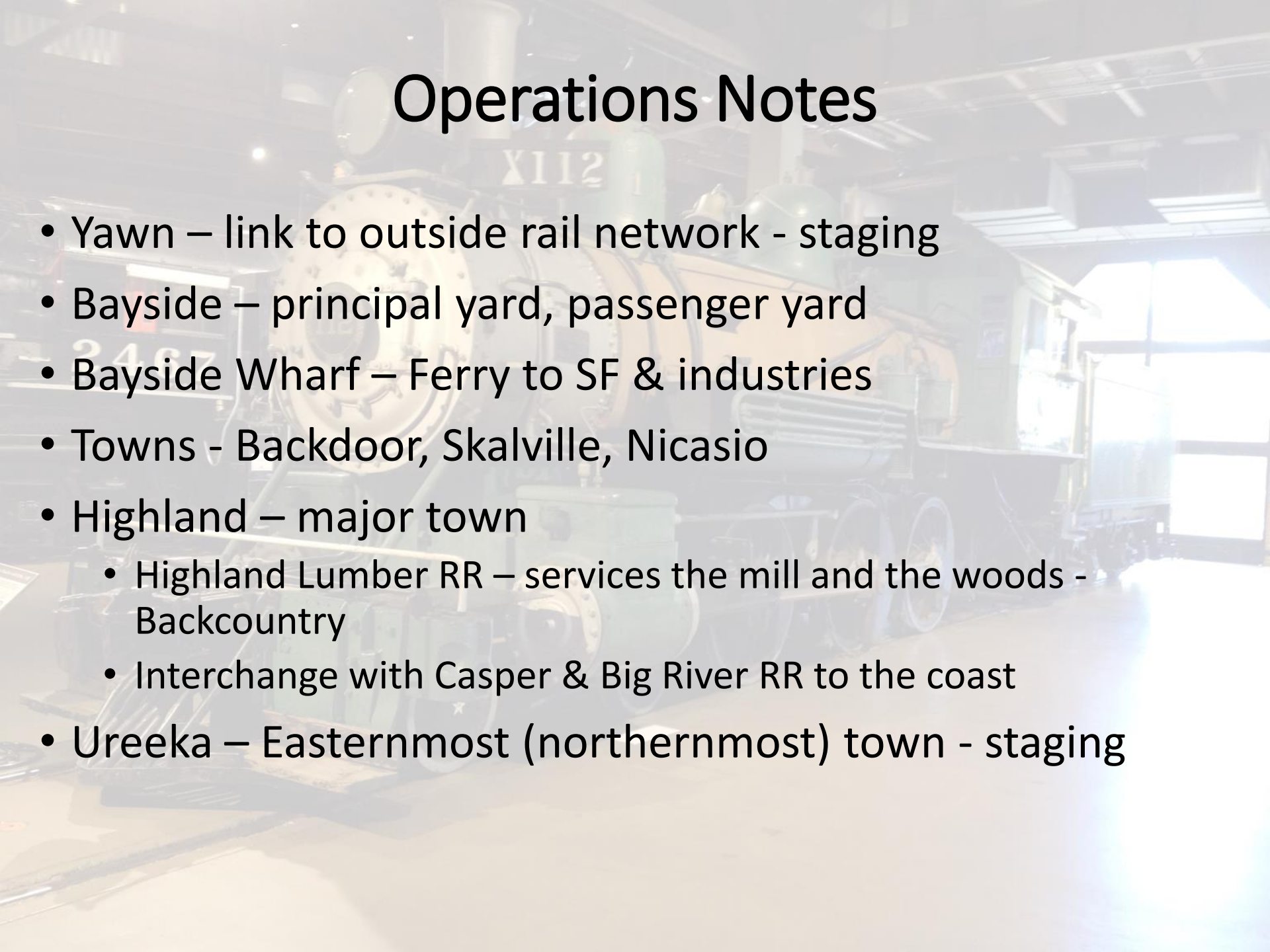


Operations Notes

A steam locomotive, numbered X112, is the central focus of the background image. It is a large, dark-colored engine with a prominent smokestack and a large flywheel. The locomotive is positioned in a well-lit museum or exhibition space, with other rail-related artifacts visible in the background. The lighting is soft, highlighting the intricate details of the engine's machinery.

- Yawn – link to outside rail network - staging
- Bayside – principal yard, passenger yard
- Bayside Wharf – Ferry to SF & industries
- Towns - Backdoor, Skalville, Nicasio
- Highland – major town
 - Highland Lumber RR – services the mill and the woods - Backcountry
 - Interchange with Casper & Big River RR to the coast

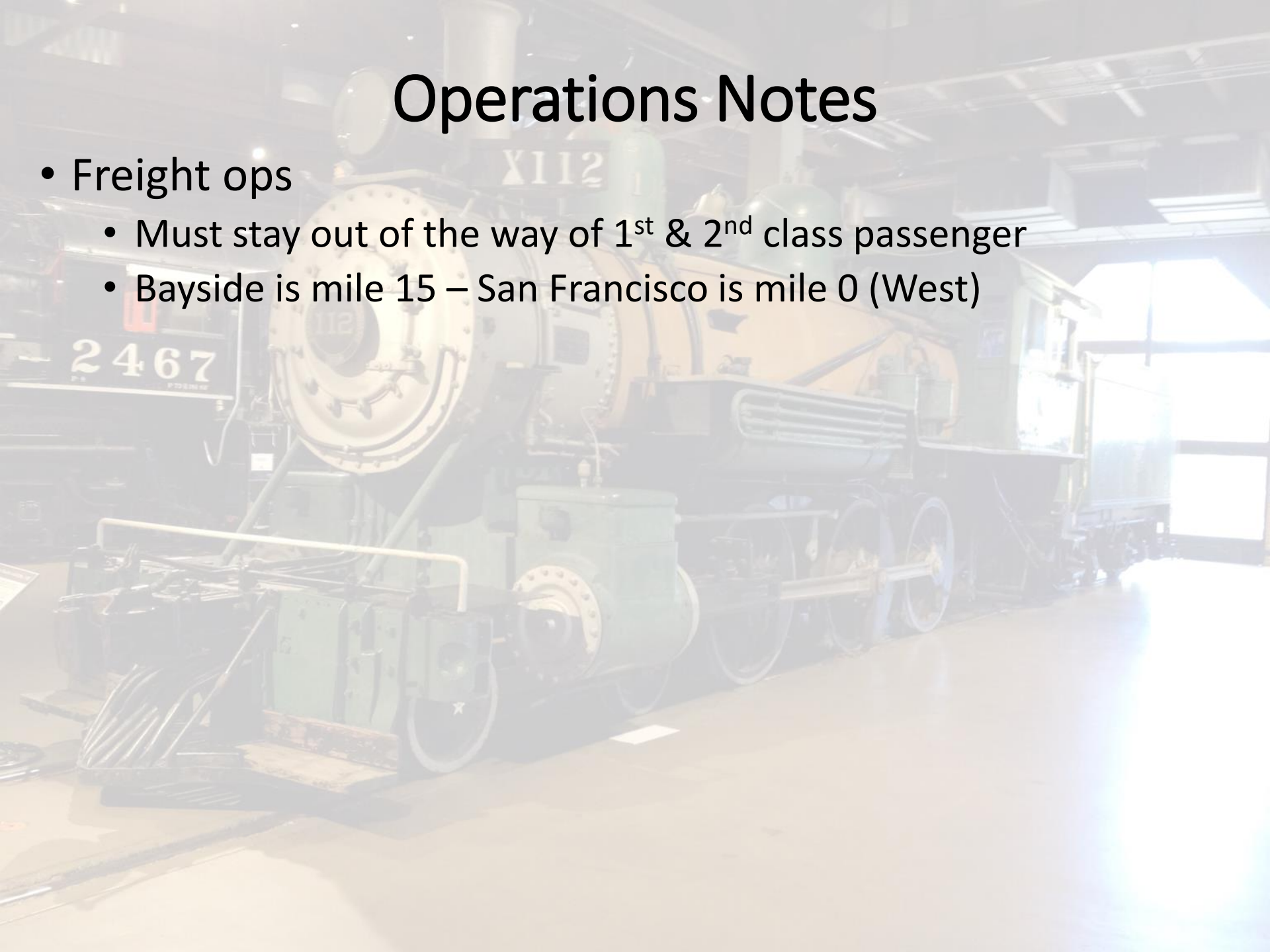
Operations Notes



- Yawn – link to outside rail network - staging
- Bayside – principal yard, passenger yard
- Bayside Wharf – Ferry to SF & industries
- Towns - Backdoor, Skalville, Nicasio
- Highland – major town
 - Highland Lumber RR – services the mill and the woods - Backcountry
 - Interchange with Casper & Big River RR to the coast
- Ureeka – Easternmost (northernmost) town - staging

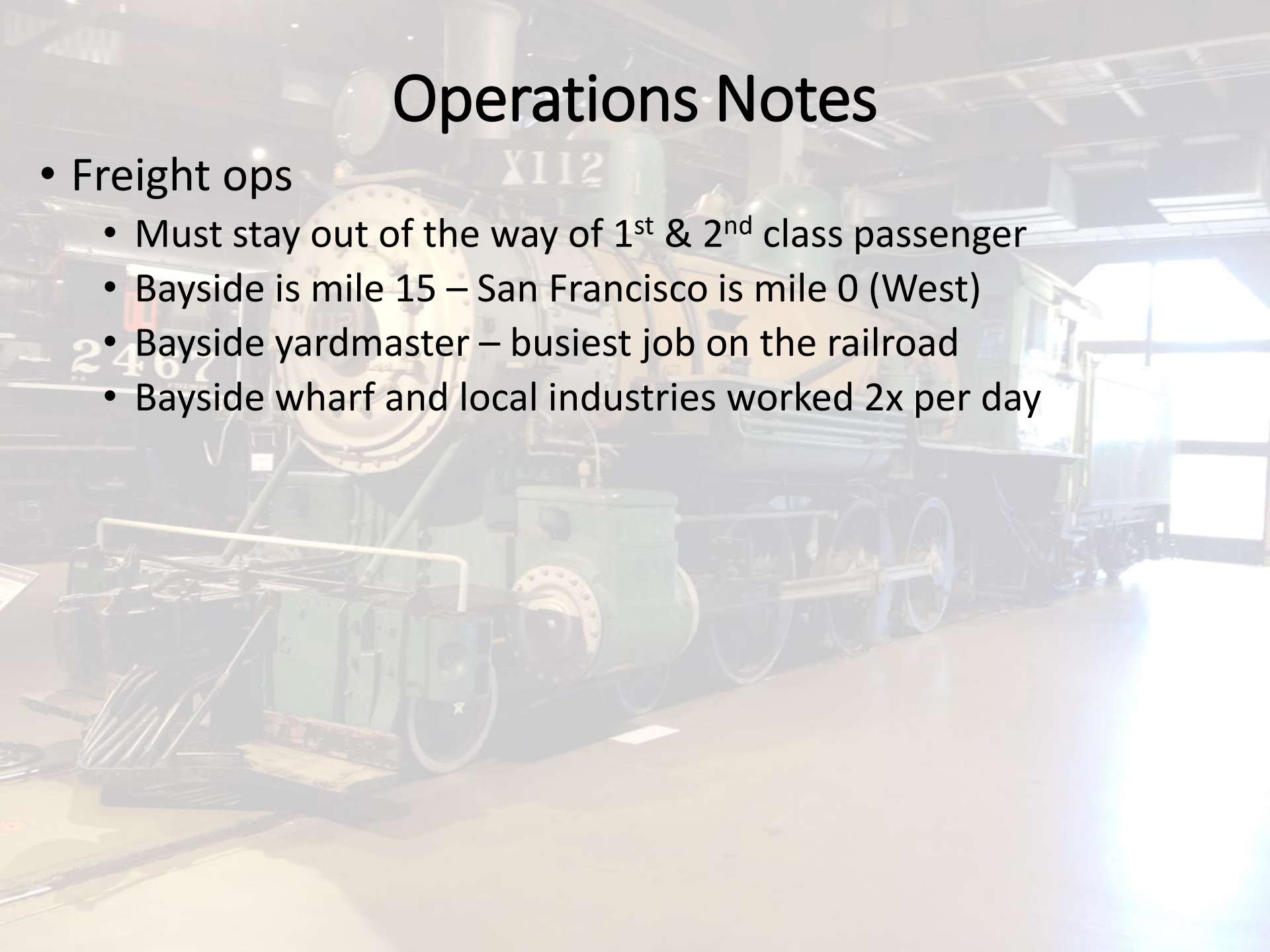
Operations Notes

- Freight ops
 - Must stay out of the way of 1st & 2nd class passenger
 - Bayside is mile 15 – San Francisco is mile 0 (West)



Operations Notes

- Freight ops
 - Must stay out of the way of 1st & 2nd class passenger
 - Bayside is mile 15 – San Francisco is mile 0 (West)
 - Bayside yardmaster – busiest job on the railroad
 - Bayside wharf and local industries worked 2x per day



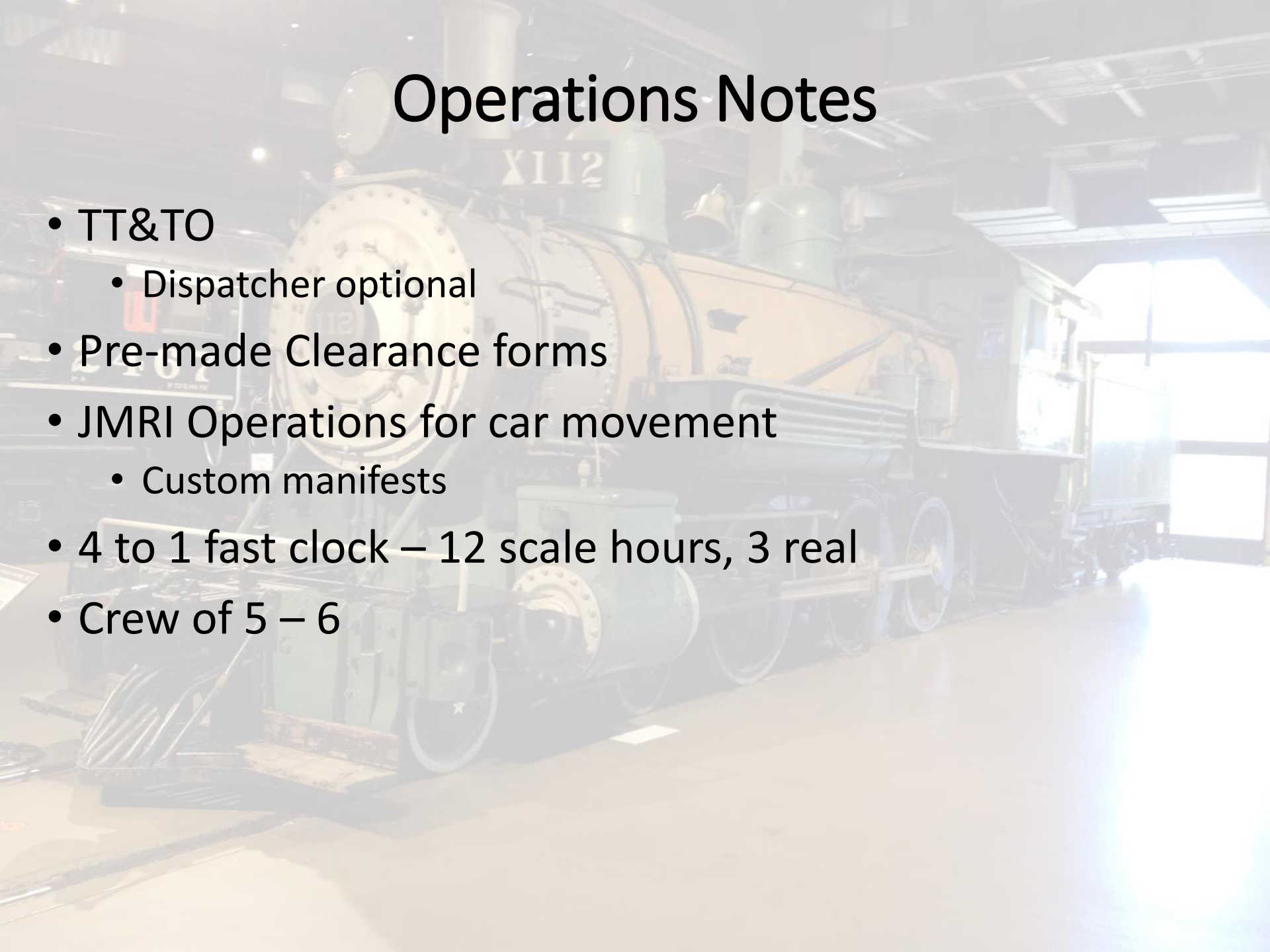
Operations Notes

- Freight ops
 - Must stay out of the way of 1st & 2nd class passenger
 - Bayside is mile 15 – San Francisco is mile 0 (West)
 - Bayside yardmaster – busiest job on the railroad
 - Bayside wharf and local industries worked 2x per day
 - “Hauler” Bayside – Yawn – BOD/EOD transfer
 - “Express” Bayside – Highland interchanges - Ureeka
 - “Peddler” Bayside – Highland and all points in between

Operations Notes

- Freight ops
 - Must stay out of the way of 1st & 2nd class passenger
 - Bayside is mile 15 – San Francisco is mile 0 (West)
 - Bayside yardmaster – busiest job on the railroad
 - Bayside wharf and local industries worked 2x per day
 - “Hauler” Bayside – Yawn – BOD/EOD transfer
 - “Express” Bayside – Highland interchanges - Ureeka
 - “Peddler” Bayside – Highland and all points in between
 - Highland Lumber RR - “Logger” Mill – Interchange – Backcountry
 - Casper & Big River is interchange track only

Operations Notes



- TT&TO
 - Dispatcher optional
- Pre-made Clearance forms
- JMRI Operations for car movement
 - Custom manifests
- 4 to 1 fast clock – 12 scale hours, 3 real
- Crew of 5 – 6

Coming As Soon As It's Safe



Nicasio Northern Railway Today



The Great Tectonic Shift

Questions?

SIG Weekend January 2021

Jon Schmidt

Nicasio Northern Railway

jontenor@gmail.com