



INDEX

	Page Number	Section Number
Abbreviations, Lumber	209	
Alternate Board Grades	76	30.50
Alternate Factory and Shop Grades	160	98.00
Appearance Framing	102	51.00
Australian Clears	47	10.17
Battens	58	
Beams and Stringers	129	70.00
Bevel or Bungalow Siding	53	16.00
Bevel Siding, Cedar	63	21.00
Boards	67	30.00
Commons	68	30.10
Alternate Board Grades	76	30.50
Stress-Rated	81	30.60
Box Lumber	145	91.00
Casing and Base	51	11.00
Ceiling, Drop Siding and Rustic	51	12.00
Ceiling, Cedar	61	20.10
Certification Mark	19	
Characteristics, Measurement of	181	200.00
Clear Paneling	52	14.00
Combination Species	19-21	
Corn Cribbing	52	15.00
Crook Tables		
Commons and Boards	209	
Framing Lumber	206	
Selects and Finish	208	
Cup Table	205	
Cut Stock	154	95.00
Decking		
Grade Description	110	55.00
Decking Design Values	114	
Dense Douglas Fir and Larch	108	53.00
Design Values		
Explanations	169	100.00
Tables	212-226	
Dimension Pullouts	99	50.50
Door Cuttings	155	95.20
	162-165	98.00
Door Part Illustration	144	
Drop Siding	51	12.00
Eligibility for Grading Services	11	

PONDEROSA PINE CUTTING ORDERS

<u>TARGET THICKNESS</u>	<u>GRADE</u>
1.470 X RW	5/4 MLDG
1.720 X RW	6/4 MLDG
1.720 X RW	6/4 SHOP
1.470 X RW	5/4 SHOP
.950 X 11.950	1X12 #3+BTR COMMON
1.690 X 11.950	2X12
1.690 X 9.875	2X10
1.690 X 7.800	2X8
1.690 X 5.900	2X6
1.690 X 3.900	2X4
.950 X 4+6	JACKET BOARDS

HEADRIG

TURN THE LOG & REMOVE 5/4 MLDG. THEN CUT FOR 6/4 #3+BTR SHOP. AVOID 6/4 SHOP OUTS. IF LOG CONTAINS PITCH POCKETS B BIRDS EYE CUT 6/4 DOWN TO 12" CANT.

EDGERS

RANDOM WIDTH ALL #3+BTR SHOP. * PIECES WHICH CONTAIN AT LEAST:

- ONE 5"X42" CUTTING
- (OR) ONE 9X28" CUTTING
- (OR) 40% 2 1/2" X 28" CUTTINGS

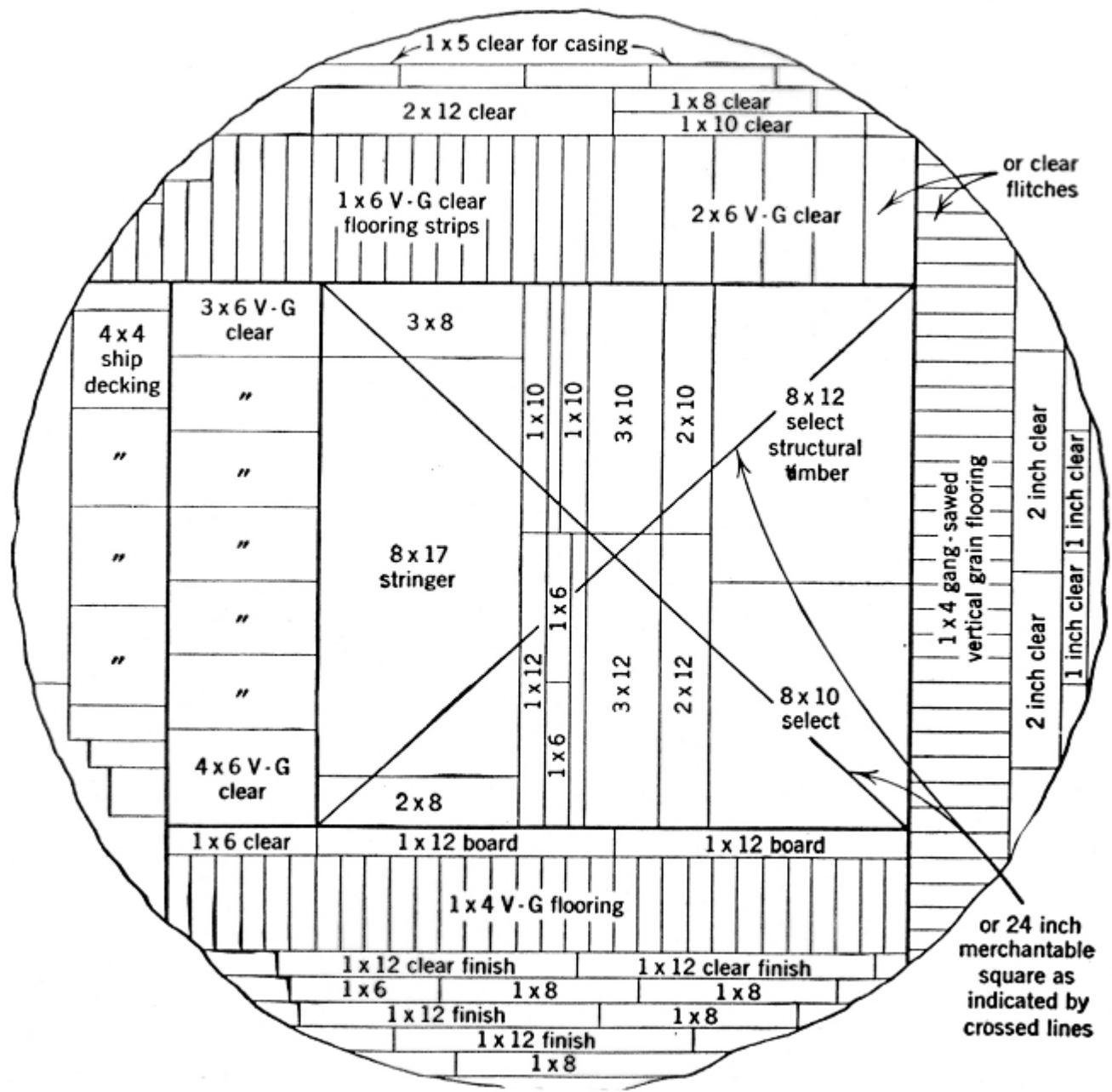
RIP MOULDING + BTR 5" & WIDER. ISOLATE STAIN WHEN POSSIBLE. DON'T CREATE A SHOP OUT BY RIPPING MOULDING OFF SHOP.

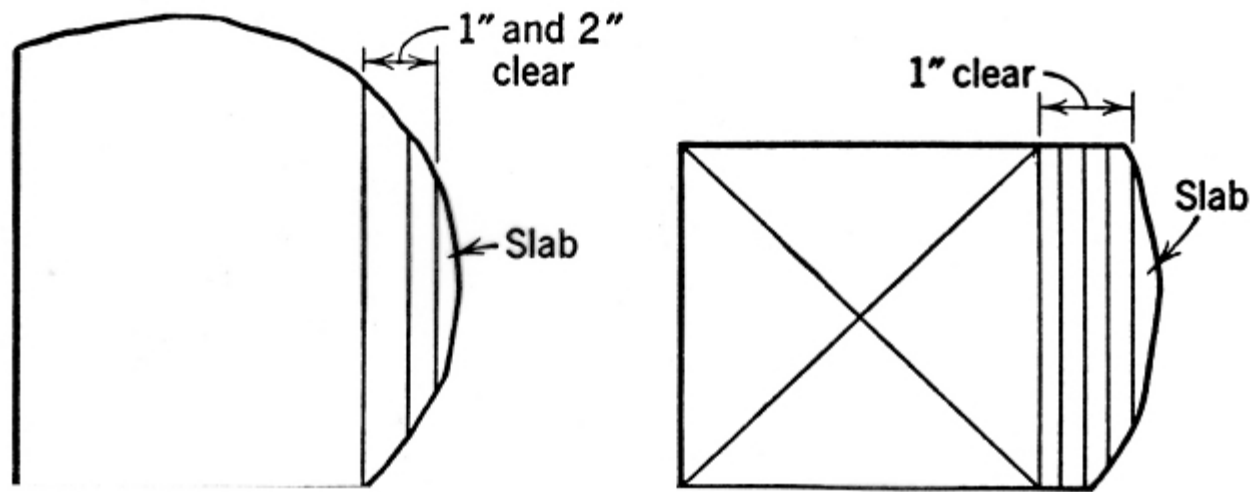
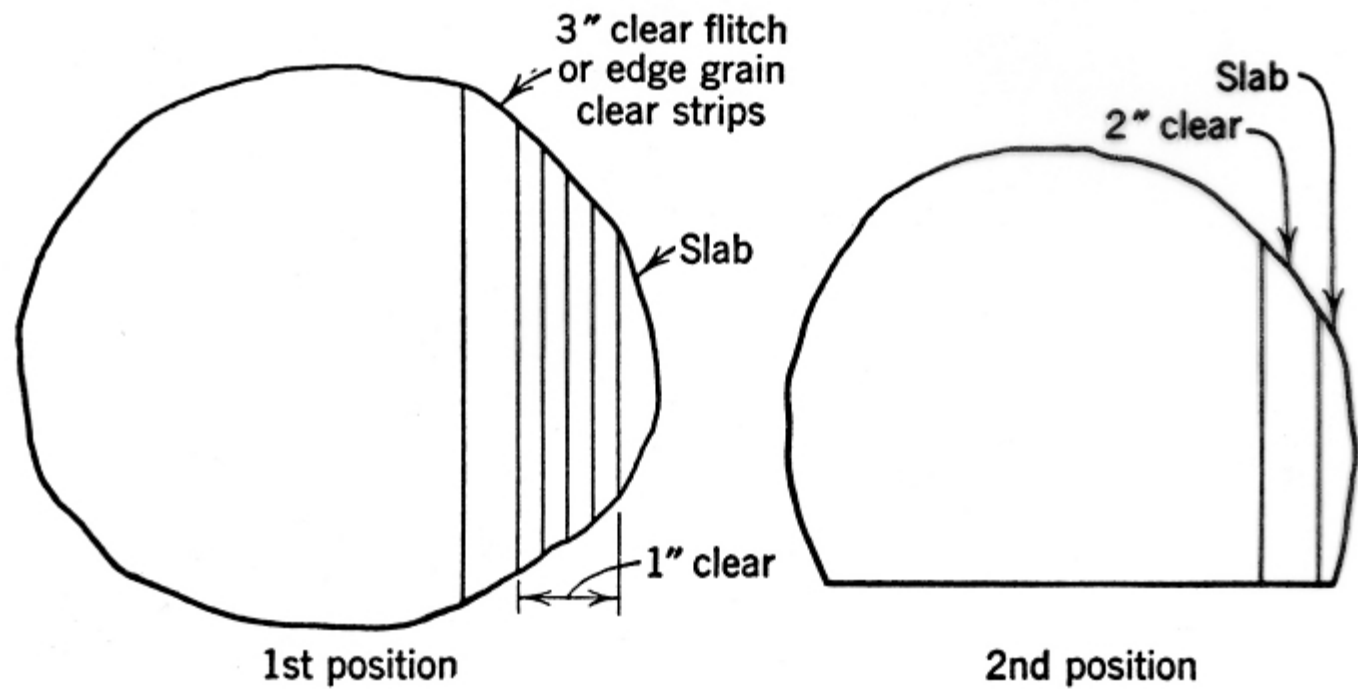
GANG

RUN TIGHT, BRIGHT, SMALL KNOTTED CANTS THROUGH THE 4/4 BANK. RUN LARGE KNOTTED & BLACK KNOTTED CANTS THROUGH THE 6/4 BANK.

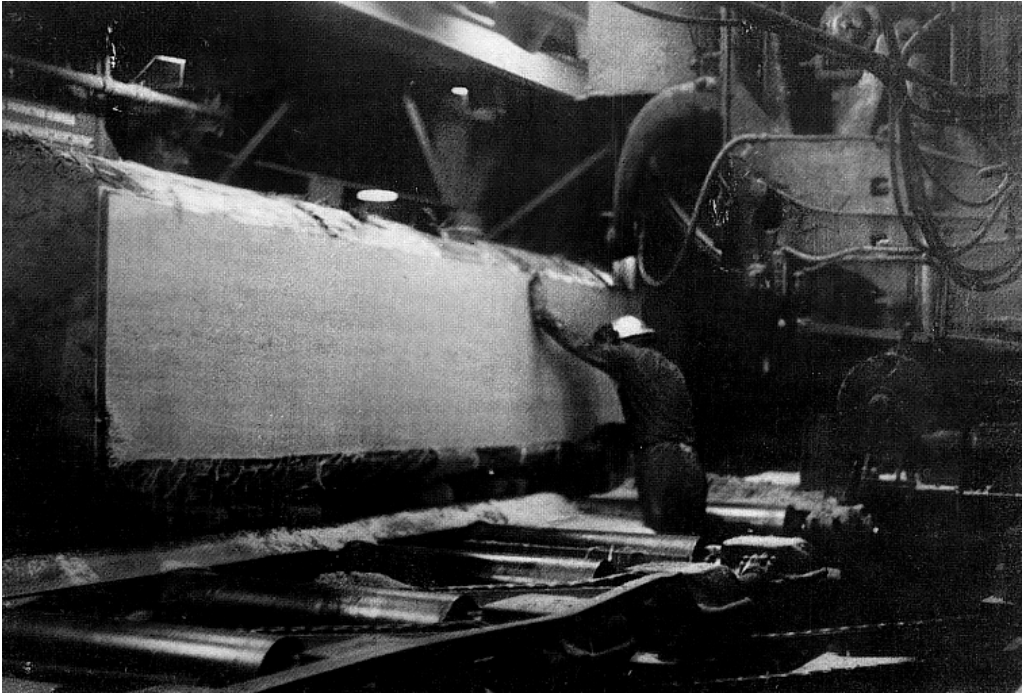
PUSH PUL. NSCRAMBLER, TRIM SPOTTER, #2 DIVERTER

MARK 5/4 & 6/4 MLDG & SHOP WITH MARK 1 ON BIN SIDE. ON TRAY SIDE USE A MOULDING MARK FOR MOULDING AND A HORIZONTAL MARK FOR SHOP.





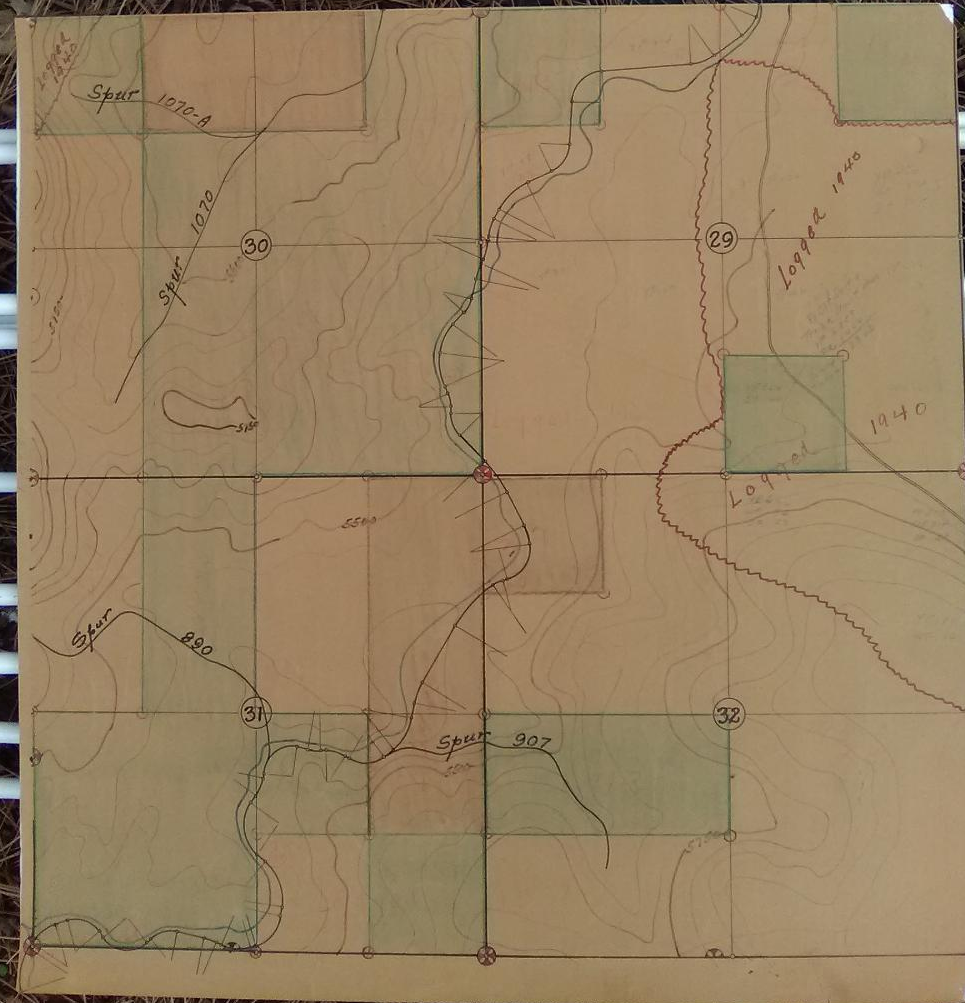




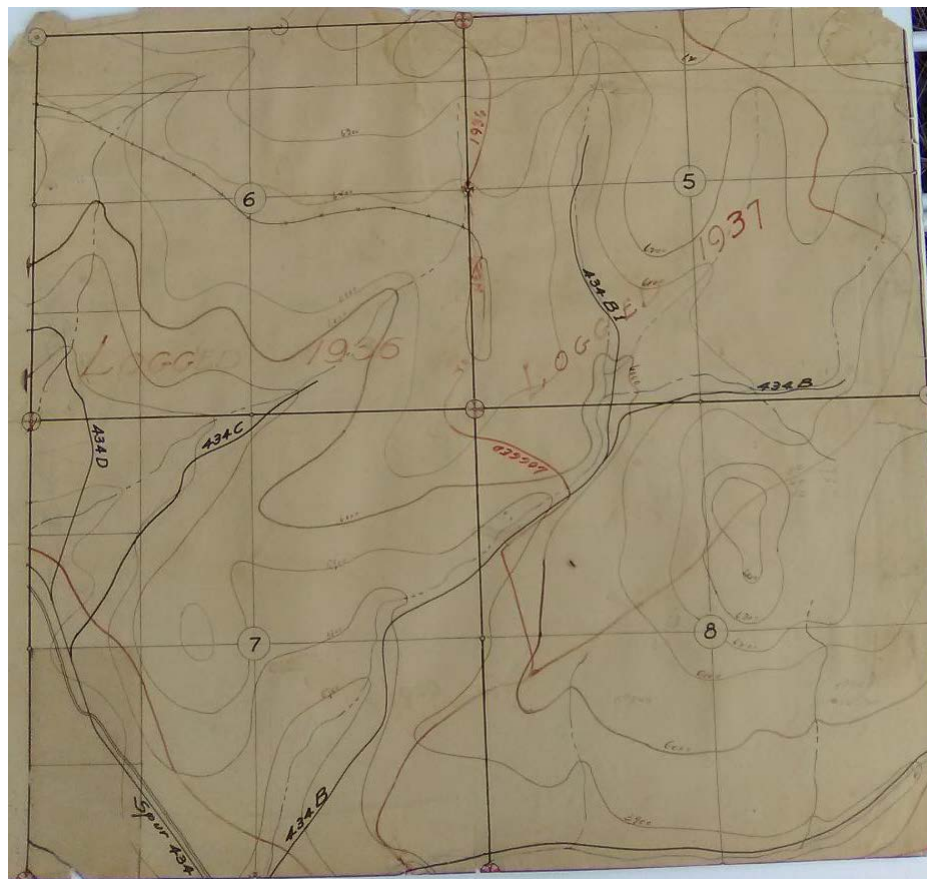










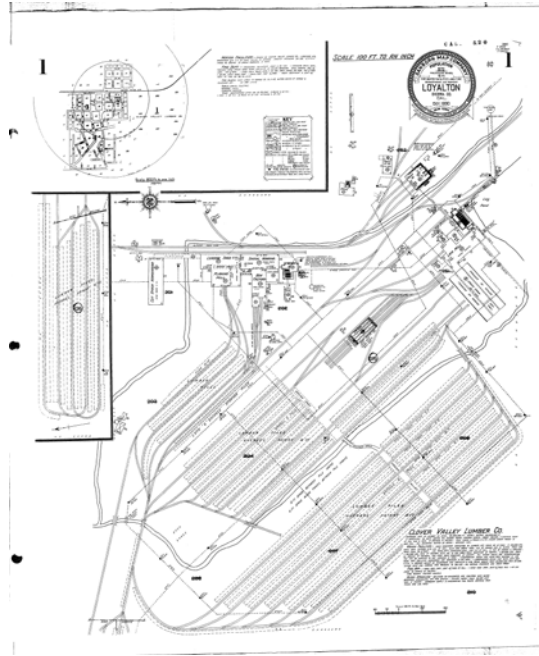




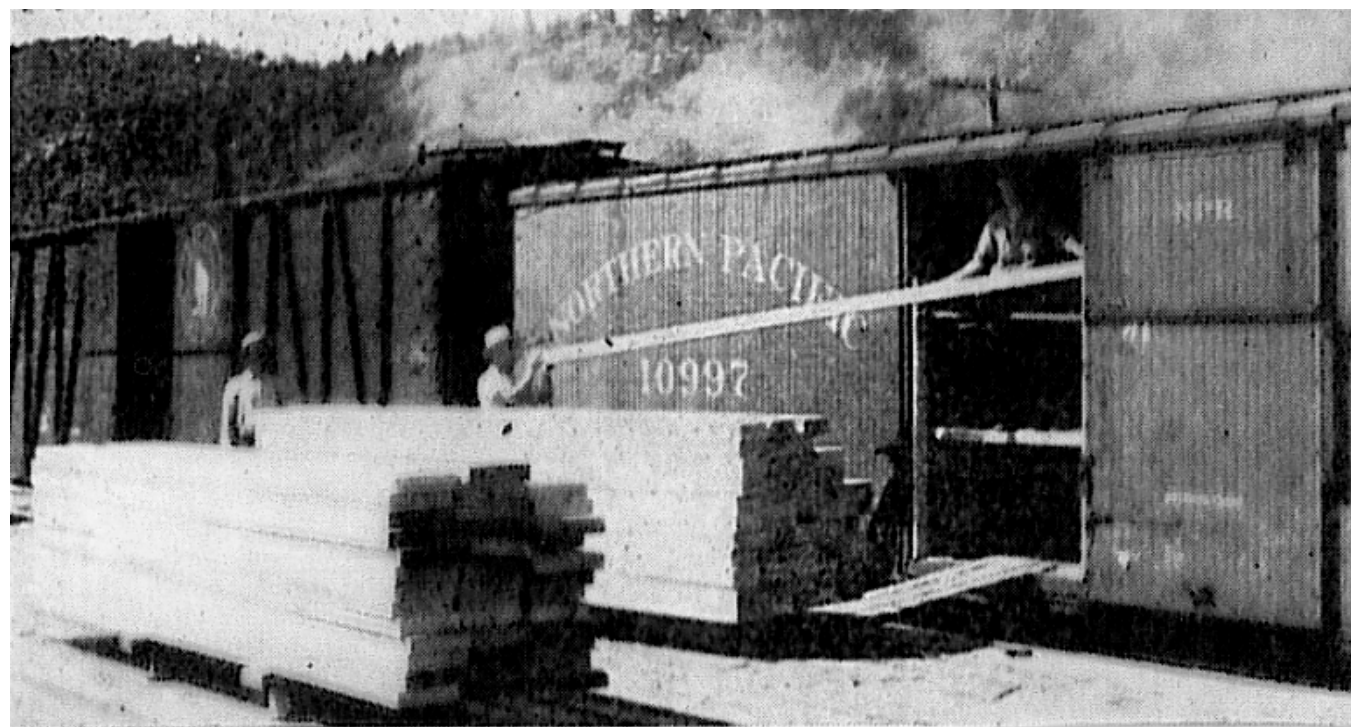












LOADING A BOX CAR





Time to take notes.